

PLAT AND RECORD OF SURVEY No. 791

Request of B. F. Waterman, Nov. 27th 1885.

Course	Degrees	Minutes	Chains	Links	
					Subdivision of Sec. 27, T. 55 S., R. 34 E. for B. F. Waterman
					Assisted by Warren Raymond and Ebon S. Waterman, sworn chemists, Iowa
					made at cor. for secs. 22, 23, 26 & 27, T. 55 S., R. 34 E. and run on random line
					between Secs. 26 & 27
			46	00	Find some indications of Sec. 24 S.; set temp. cor. at 20 & 40 chs.
			50	16	To original cor. for secs. 26, 27, 34 & 35. Find charred stake in mound; plain pits in 34 & 35; Ditch fence runs west from cor. Set, over charred stake, a basalt stone 8x8x7 ins., marked 2 notches on E. and 1 notch on S. corners, 15 ins. in ground. W. T. Hill and C. J. Wagner, present, identify this cor. as the original Sec. cor. They, also, identify exact locality of 1/4 S. bet. Secs. 26 & 27; both have seen the original stake in mound with pits at a point 107 1/2 links south of my temp. cor., which point is identified by ditch fences running N. & S. and E. & W.; or, S. & W. from cor. Set, at such point a basalt stone 12x9x7 ins., marked 1/4 on E. face, 2 1/2 ins. deep, on W. hill side.
					I move temp. 1/4 S. cor. on N. 1/2 of line bet. Secs. 26 & 27.
					5 1/4 links north and set basalt stone marked + on top, 20 ins. deep; 15 links west, a ditch fence begins and runs south.
					I find cor. for Secs. 21, 22, 27 & 28. - Gov. charred stake in mound, plain pit in Sec. 27. Set a basalt stone 12x9x6 ins., 18 ins. deep. A ditch fence runs N. & S.; a wire fence runs E. from corner, on bench - Ravine N. S. & E.
					I run, thence, on random line bet. Secs. 27 & 28. ca. 23° 30' E
South			20	00	Set temp. 1/4 S. cor.
			40	10	To 1/4 S. cor. bet. Secs. 27 & 28. - Find original charred stake in mound. I set, over old Gov. post, a basalt stone 11x8x6 ins. marked 1/4 on E. side; Ditch fence runs E. & W.; a railroad fence runs S.; and, 17 links E., a ditch fence runs North. I move 1/4 S. cor. (temp.) on N. 1/2 of line bet. Secs. 27 & 28, South 2 links, and set a basalt stone 11x8x6 ins., 18 ins. deep, between two ravines, on hill side facing East.
					Friday Nov. 27 th 1885.

Course. Degree. Minutes. Chains. Links.

I start from $\frac{1}{4}$ S. cor. bet. secs. 27 + 34, which corner is identified both by W. F. Hill and A. J. Wagner; I find here remnants of charred cottonwood stake, plain pit on N.; I set, over stake, a basalt stone 10 x 8 x 5 ins. 24 ins. under surface, at east end of ditch fence running W. and on South side of prairie course N. 8.

Run, thence, on random line through center sec. 27. $\text{ra. } 22^{\circ} 45' E.$

North

40 00 Set temp. center sec. 27.
60 00 " $\frac{1}{16}$ S. cor. on NW of N + S center 27
81 12 Int. E + W line, or true line bet. N.E. cor. + N.W. cor. $\text{Sec. } 27$

making this point for temp $\frac{1}{4}$ S. cor., I go to N.E. cor. Sec. 27, and, from there, could see a flag at N.W. cor. Sec. 27. I run thence on true line bet. sec. 22 + 27. $\text{ra. } 21^{\circ} 30' E.$

West

40 00 Set temp $\frac{1}{4}$ S. cor.
41 81 Temp $\frac{1}{4}$ S. cor, the terminus of N. + S. center line
79 95 To N.W. cor sec 27.

I move temp. $\frac{1}{4}$ S. cor. $2\frac{1}{2}$ links East, and set a basalt stone, 12 x 10 x 7 ins., marked $\frac{1}{4}$ on N. face, 18 ins. deep.

$$81.12 : 1.84 :: 40 : x, \text{ or } 90 + (1.81 + 2 = 1.84)$$

$81.12 : 1.84 :: 60 : x, \text{ or } 1.36 +$ I, therefore, move temp. cor. to wit: temp center 27, East 90 links, to true N + S. center line, and temp $\frac{1}{16}$ S. cor., 136 links East, to true N + S center line $\text{Sec. } 27$

Beginning next, at $\frac{1}{4}$ S. cor. bet. Secs. 26 + 27, I run on random line, through center sec. 27

39 22 Int. true N + S. center line 111 links N. of temp center 27.
79 34 " N. + S. line 22 links N. of $\frac{1}{4}$ S. cor. bet. Secs. 27 + 28.

I move point of intersection of cross lines 11 links South and made temp. center cor. at true pt.; $81.12 - 41 = 40.12$; $40.12 : 20.06$; I move temp $\frac{1}{16}$ S. cor. on true N + S. center, North 106 links and set stone 8 x 7 x 5 ins., marked + on top, and + on N. face, 24 ins deep., For plat see Pa. 138. Sat. Nov. 28. 1885.

W. F. Chalk, Co. Surveyor.
Per Geo. C. Arnold, Dpty.

PLAT AND RECORD OF SURVEY No. 789

Course. Degree. Minutes. Chains. Links.

Survey for Geo. Raymond, Thos. Myers, et al. concludes.

Commence at cor. for Secs. 23, 24, 25 & 26, T. 5 N. R. 34 E. and run, wa. 21.300

East

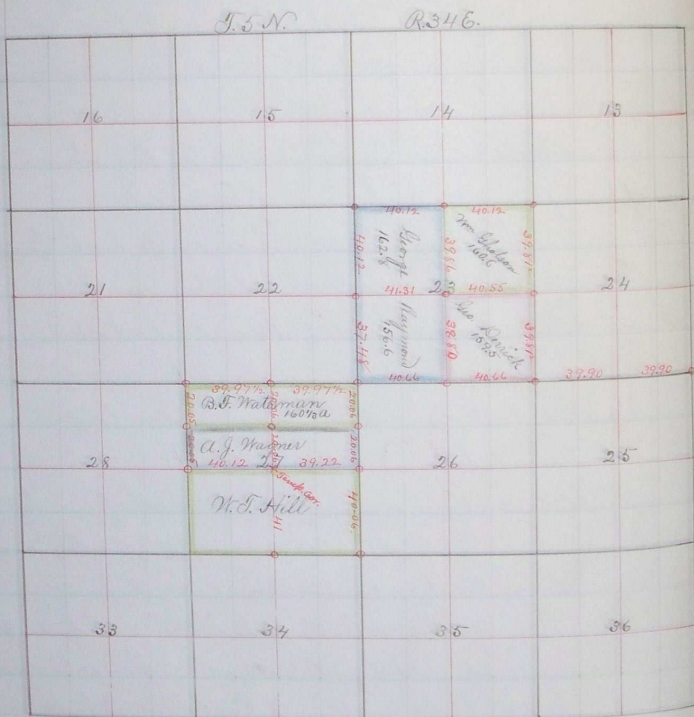
40 00 Set temp. in S. on a random line bet. Secs 24 & 25.

79 80 Int. Sp. line 178 links South of cor. for Secs. 24 & 25 on Sp. line.

I find original charred stake in mound at N. end of old ditch in lane N. & S. I set over charred stake, at true points, a brass Stone 12 x 8 x 8 ins. marked 2 notches on South corner.

Present, Thos. Myers, J. J. Johnson, Geo. Raymond and H. C. Derrick.

I more temp. in S. 10 links west, thence, 89 links North and left a temp. mark
Wednesday Nov. 25. 1885



Stone corners marked.

W. T. Chalk Co. Surveyor.

Per Geo. C. Arnold, Dpty.