

John F. Miller

Survey of Section 27. 42958

May 26<sup>th</sup> 1891

After qualifying John McLaughlin and Enoch Russell as Chaimmen I proceeded in the following manner to reestablish the lost corner for Secs 26, 27, 34<sup>th</sup> & 35<sup>th</sup> being assisted by J. L. Arnold Depty. County Surveyor.

Having carefully adjusted our instrument we went to the point claimed for the  $\frac{1}{4}$  post on the N + S line between Secs 34 + 35. Found pits plainly visible with slight indication of mound with top of Gov. States lying on top of ground nearby. Upon digging in mounds found bed of charred staves + coal well defined. Witness Les Mitchell John McLaughlin + W. C. Kimbrey. W. C. Kimbrey states that the original Gov. State was standing at this point 12 years ago next August when he first saw it.

To perpetuate the corner we buried end of charred staves, Reset old staves, dug pits + Raised mound, From which we run Var. 22' E.

North .. .. 40 ..

Set temp post on N + S line

" .. .. 77 70

Intersect E + W line at a point 83 links East of a rock set in road and claimed as the cor. Upon digging beneath said rock we found end of charred staves in good preservation and undisturbed. To perpetuate said corner left the end of charred staves buried baser Rock 6 x 8 x 10. dug pits raised mound etc. Our correction for hub but our would be 446 links

John F. Miller Coast

West end one chain and 15 links south.  
Having made this correction we applied the  
test of Through sight from North to South  
and found it correct.

Having thus established a point on the  
N + S line I proceeded to establish the E + W line  
in the following manner. Went East to the  
point claimed as the  $\frac{1}{4}$  Cor between Secs 26 + 27  
Failing to find evidence of Gov. Corner I proceed-  
ed East to Sec corner of 25, 26, 27 + 28. Found  
mound pits + Gov post in good condition + indis-  
putable. From which we run **Var. 21° 45' East**

West	Degrees	Minutes	Chains	Links
40	00	00		
30	00	00		
20	00	00		
31	00	00		

Set true  $\frac{1}{4}$  post between 26 + 27  
Intersect our N + S line 1 chain + 5 links South of temp Cor.  
No indications of Corner

Intersect N + S line 16 links North of point claimed  
for the corner. To prove this point as the true  
Corner we dug in the east track of the road  
and found charred end of bottom wood stave  
well defined to perpetuate the same I left  
end of charred stave buried a basalt rock  
6 x 10 x 3 Marked + on four sides, Witnesses  
Wm Pinkerton John McLaughlin Cnoch Russell  
Hence my correction for a true line will be  
4 links South to each 40 chains for East to West  
and  $\frac{1}{2}$  chain East for  $\frac{1}{4}$  post on South line  
of Sec 27.

We returned to temp. corner of Secs 26, 27, 34 + 35  
and established permanent corner at the inter-  
section of our corrected line N + S + E + W, by burying  
Basalt Rock 8 x 6 x 16 raising mound, digging  
pits and planting staves. Witnesses Russell Lee Mitchell.

Course.	Degree.	Minutes.	Chains.	Links.

## John W Miller Cont.

Said corner of Secs 26, 27, 34 & 35 being 2 Rods East +  $1\frac{1}{2}$  Rods North of corner set by A. S. Coffey in a previous survey and about  $7\frac{1}{2}$  Rods South of a corner once set by T. J. Moore Jones. We must proceed to establish the  $\frac{1}{4}$  post on the South line of Sec. 27. We find our placing it at a point on a true line Equidistant between the to Sec. Corners it will be about two rods East +  $1\frac{1}{2}$  Rods North of where the original corner was supposed to have stood. Mrs. Pinkerton - who lives adjacent to said corner stated that she with her husband came there 10 years ago next August. That Mrs. Pinkerton + a Mr. Knowles made diligent search but failed to find any corner so built their fences to the spot claimed now as the corner supposing it to be right.

Mrs. Green stated came here 9 years ago + state was not here at that time. Mrs. Seaborn of Whovin we bought the land claimed the corner was further North than parties now claim. There being no evidence that the Gov Cor ever stood where parties claim - and said point being out of line - and not equidistant from Sec. Corners. We proceed to set permanent  $\frac{1}{4}$  post on our true line Equidistant from Sec. Corners. Set two basal Rocks marked X +  $\frac{1}{4}$  raised mound + dug trench. Witnesses John Miller La Mitchell R. Jamison John McLaughlin -

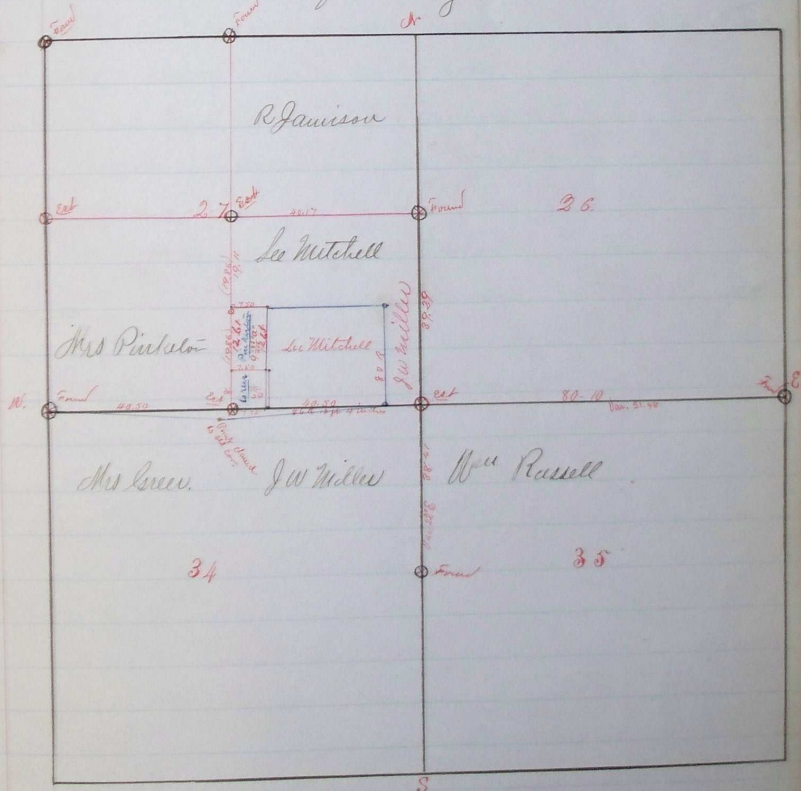
To Establish S.E. Corner of Land Sec'd from J. W. Mitchell to Sec. Mitchell

We set central point on South line of Sec. 27

PLAT AND RECORD OF SURVEY No. 1117

Course Degree: Minutes. Chains. Links.

John W Miller lease  
 at a point 30 Rods East of SW Cor of the  
 SE 1/4 of Sec from which we run East  
 a distance of 86 Rods 12 feet + 4 inches and  
 set post raised mound + dug trench from  
 which we run due north a distance of 83 Rods  
 and set stakes by request said point being  
 agreed upon as a corner between Mitchell + Miller  
 the only parties interested. Witnesses John M. Gough  
 lin. Enoch Russell + J. C. Arnold. Corners were  
 found lines run + corners established as per  
 above notes + the following plat,



Recorded June 8th 1881  
 J. W. Raley Co. Surveyors

We hereby certify that the above notes + Plat are correct  
 as by us determined May 26 + 27, 1881  
 J. W. Raley Co. Surveyors  
 J. C. Arnold, E. G. Gough