

PLAT AND RECORD OF SURVEY No. 1
 Amatilla County Farm

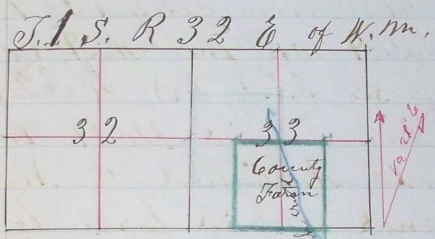
Course Degree Minutes Chains Links

			after duly qualifying Chas. H. H. H. and J. S. Scribner as chairmen and S. L. Morse as marker We proceeded to Survey out The Amatilla County Farm to wit
			commencing at the $\frac{1}{4}$ sec post on the West boundary of Sec 33. T 1 S R 32 E of W. M.
East	20 00		from said Post we run and established the North West corner of said farm by planting Post and building mound
"	19 50	Road	from said corner we run
	20 00	Creek course N. W.	
	40 00	built Rock mound for North East corner from which we run	
South	40 00	built Rock mound for S. E. corner from which we run	
West	3 00	foot of hill	
	4 00	Road	
	4 58	enter field	
	20 00	$\frac{1}{4}$ sec post ^{a stone 20-15} on South boundary of Sec 33	
	40 00	Planted Post for S. W. corner from which we run	
North	8 50	fence and enter field	
	34 00	leave field	
	40 00	Intersect N. W. corner	

PLAT AND RECORD OF SURVEY No. 1

Plat of County Poor Farm

Course Degree Minutes Chains Links



I hereby certify that the above
 is a true and correct survey
 and Plat of Umatilla County
 Poor Farm
 Sept 4th 1882

A. L. Coffey
 County Surveyor of Umatilla Co
 Oregon