

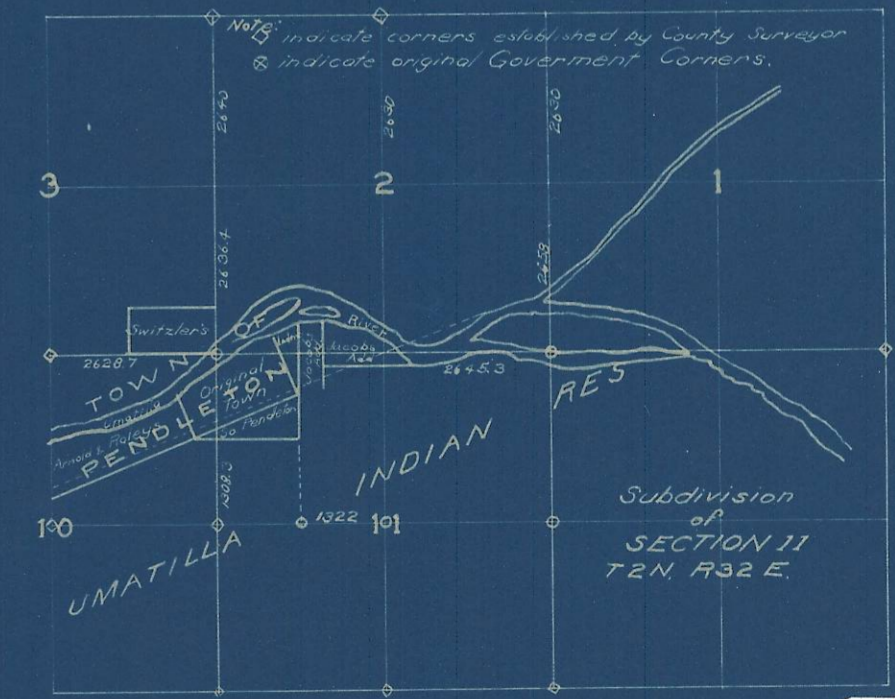


MAP
OF THE
TOWN OF PENDLETON
OREGON
Drawn By Order of the
COMMON COUNCIL
AUG. 1881
H.D. Chapman C.E. & Surv'r
Scale 1 inch = 300 feet
Filed for record and
recorded in book 1 of deeds at page 682.

I hereby certify that this map is made
in accordance with the survey made by me
in August 1881 and by said survey the
monuments shown hereon were duly established
H.D. Chapman C.E. & Sur.

County Surveyors Office
Umatilla Co, Ogn.
Pendleton Sept 22 1881.

I hereby certify that
Section 11 of T2 N. R32 E. was subdivided by
me in August 1881 and corners established
as shown on the annexed diagram and
that the original field notes of said survey
are on file in this office
J.H. Foley Co. Surveyor
By H.D. Chapman Dept.



RESERVATION

410

Hartman Abstract Co.,
Pendleton Oregon.