

AFFIDAVIT

State of Oregon } ss.
 County of Umatilla }
 I, _____, being first duly sworn do depose and say that I am the surveyor under whose direction the Langdon Lake Resort Co. subdivision was surveyed; that it is correctly surveyed and marked off as represented under this Plat thereof

Subscribed and sworn to before me this 20th day of November, 1931.

Notary Public for Oregon
 residing at Pendleton, My Commission expires _____
 County Clerk of Umatilla County, Oregon.

APPROVAL

Approved this 20th day of November 1931.

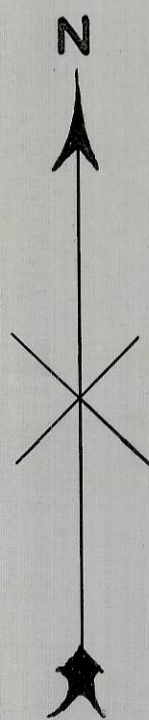
Aubrey E. Perry
 County Surveyor

Government Land

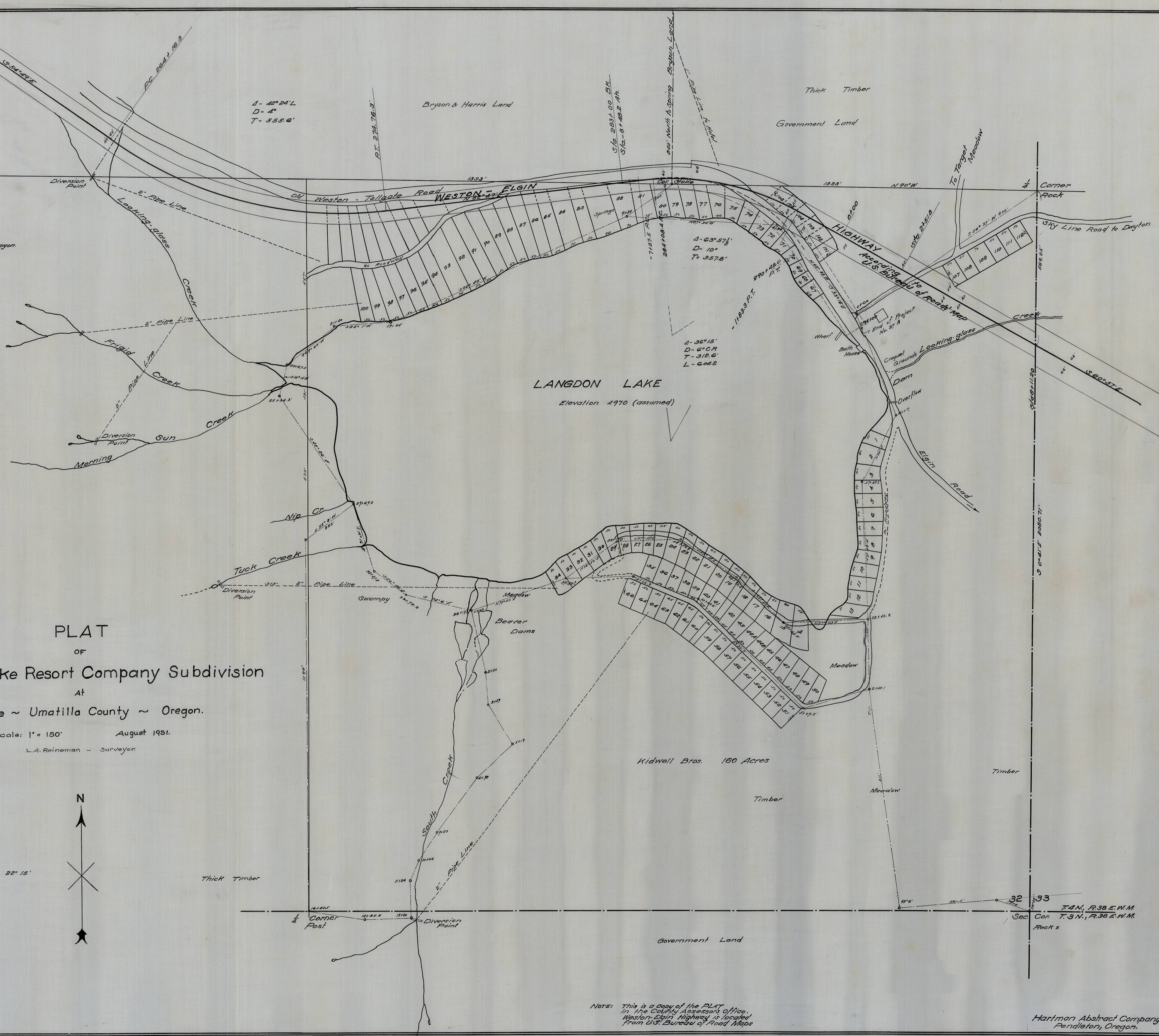
PLAT
 OF
Langdon Lake Resort Company Subdivision
 At
 Tollgate ~ Umatilla County ~ Oregon.

Scale: 1" = 150' August 1931.
 L.A. Reineman - Surveyor

Magnetic Variation 22° 15'



45



Notes: This is a copy of the PLAT in the County Assessor's Office. Western-Sign Highway is copied from U.S. Bureau of Road Maps

Hartman Abstract Company
 Pendleton, Oregon.