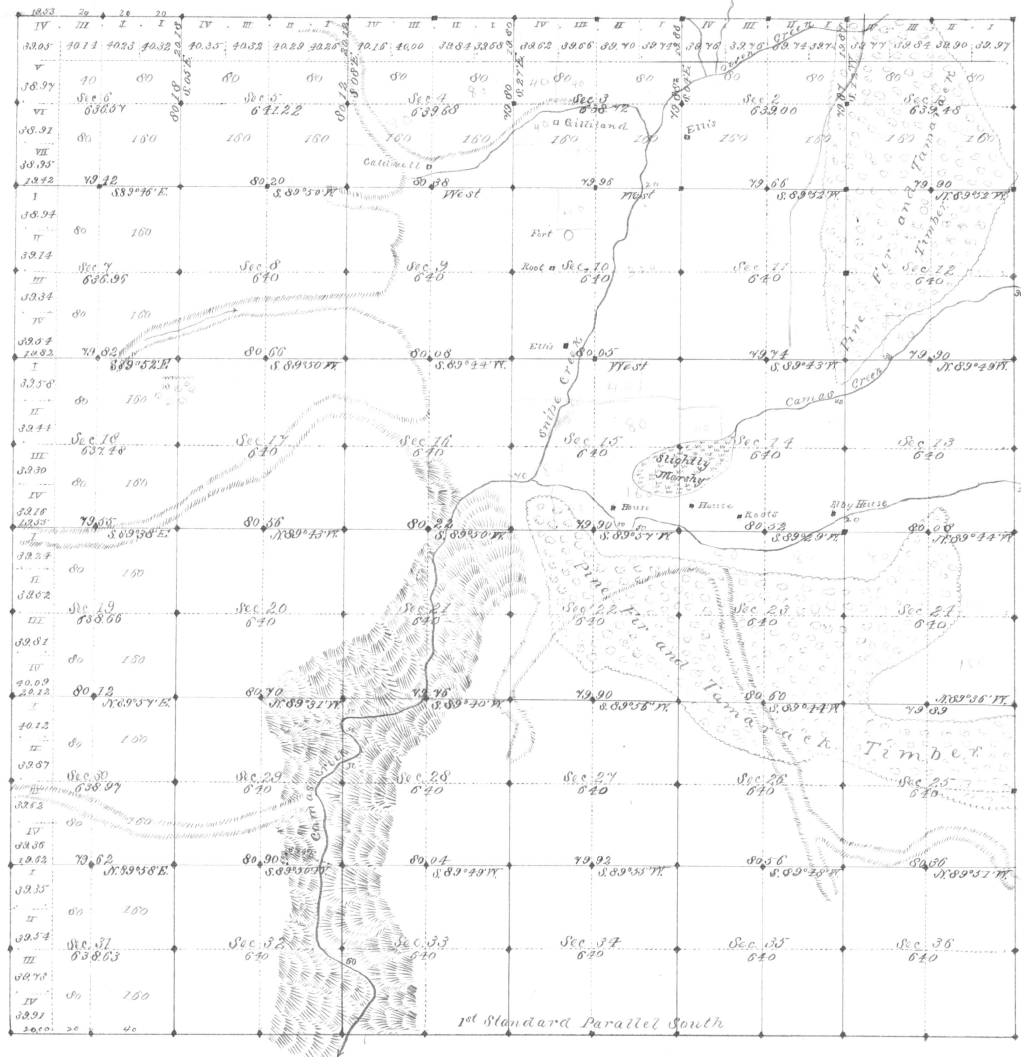


Township No. 5 South Range No. 31 East Willamette Meridian, Oregon.

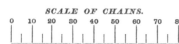
Luskend



General Description.
 The surface is mostly undulating and slopes from all sides toward the center from which a deep narrow gorge. There is an excellent water power at the head of this gulch in Sec. 16. The soil is mostly 2d rate, also much 1st and 3d rate. About one third is covered with Pine, Tamarack and Fir timber. . . . There is good grass wherever the timber is not so dense. Fully one third of this Township good farming land.

SURVEYS DESIGNATED.	BY WHOM SURVEYED.	DATE OF CONTRACT.	AMOUNT OF SURVEYS.			WHEN SURVEYED.	MAGNETIC DECLINATION.
			Miles.	Chains.	Links.		
Tp. Lines South By	George S. Perkins	July 2, 1880				17° 45' E.	
do do	do do	Sept. 17, do	14	79	53	17° 45' E.	
Subdivisions	do do do	do do do	69	32	82	do do	
No 373							

Total number of Acres, 20,025.37



The above Map of the subdivision lines of Township No. 5 South, Range No. 31 East, Willamette Meridian, Oregon, is strictly conformable to the original Field Notes of the survey thereof on file in this Office, which have been examined and approved.

U. S. Surveyor-General's Office,
 Portland, Oregon,

Dec 8 1880. James C. Williams
 Surveyor-General of Oregon.