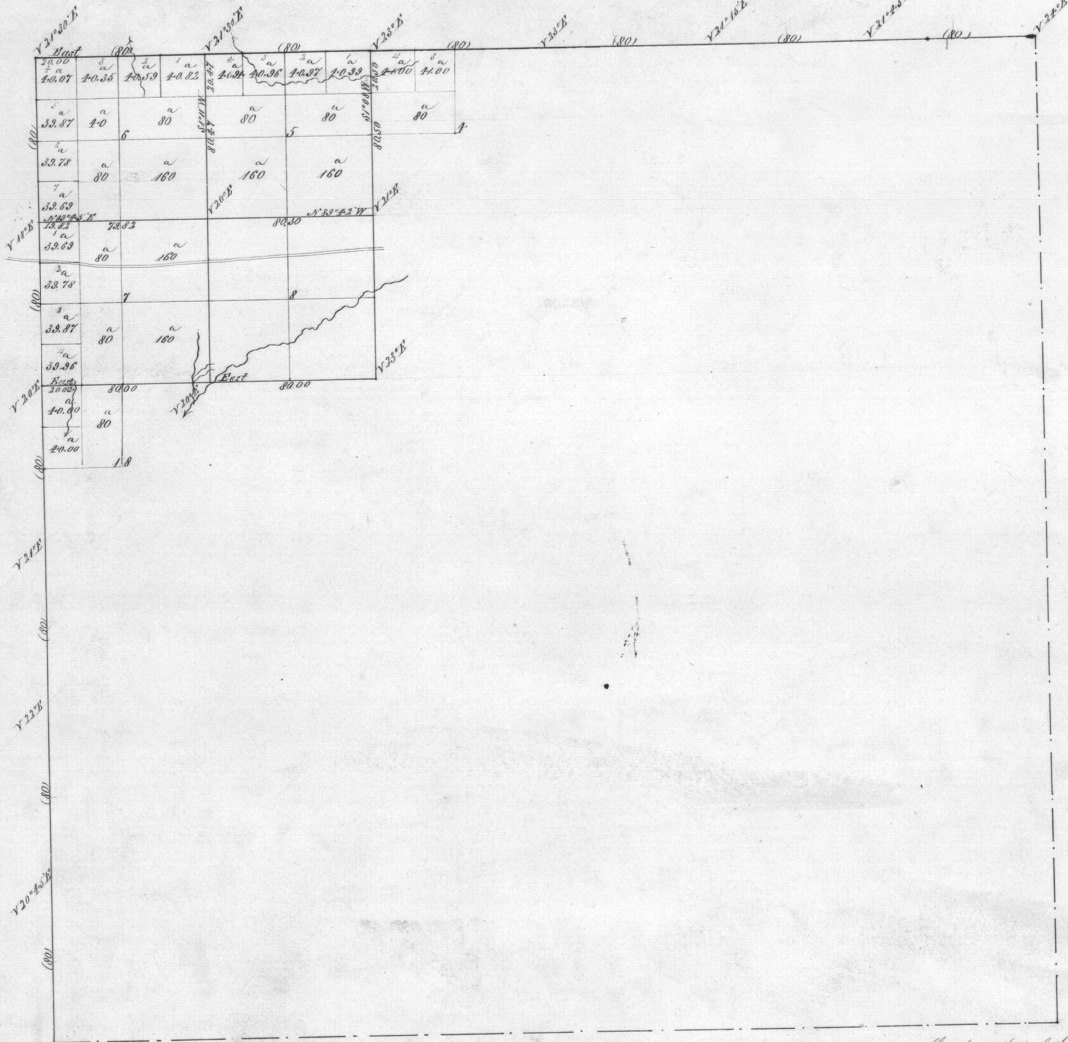
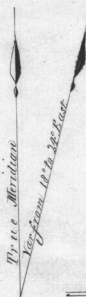


Area	
Sections	Acres
6	152.00
5	654.86
8	524.07
7	658.88
4	820.00
2	150.86
Total	3,888.53



General Description
 These four sections are the only ones of any value in the Township, there is about 400 acres of swamp found in sections 6 about 80 acres in section 7. The timber surrounding is excellent Pine Fir hemlock spruce and Willow.



Scale 1/2 inch = 1 mile

Lines	Contractor	Contract		Amt Surveyed		Commenced	Completed
		No	Date	Miles	Chain Links		
Subdivisions	George Williams	176	July 20 1872	8	01. 03	October 26 1872	October 27 1872

The above map of the subdivisional lines of Tract S. 6, S. 7, R. 38 E. Will. Was. Oregon is shown conformable to the original field notes of the survey filed on file in this Office which have been examined and approved by
 My Survey General's Office
 Eugene City, Oregon
 September 1st 1873

W. H. Cole
 Surveyor General