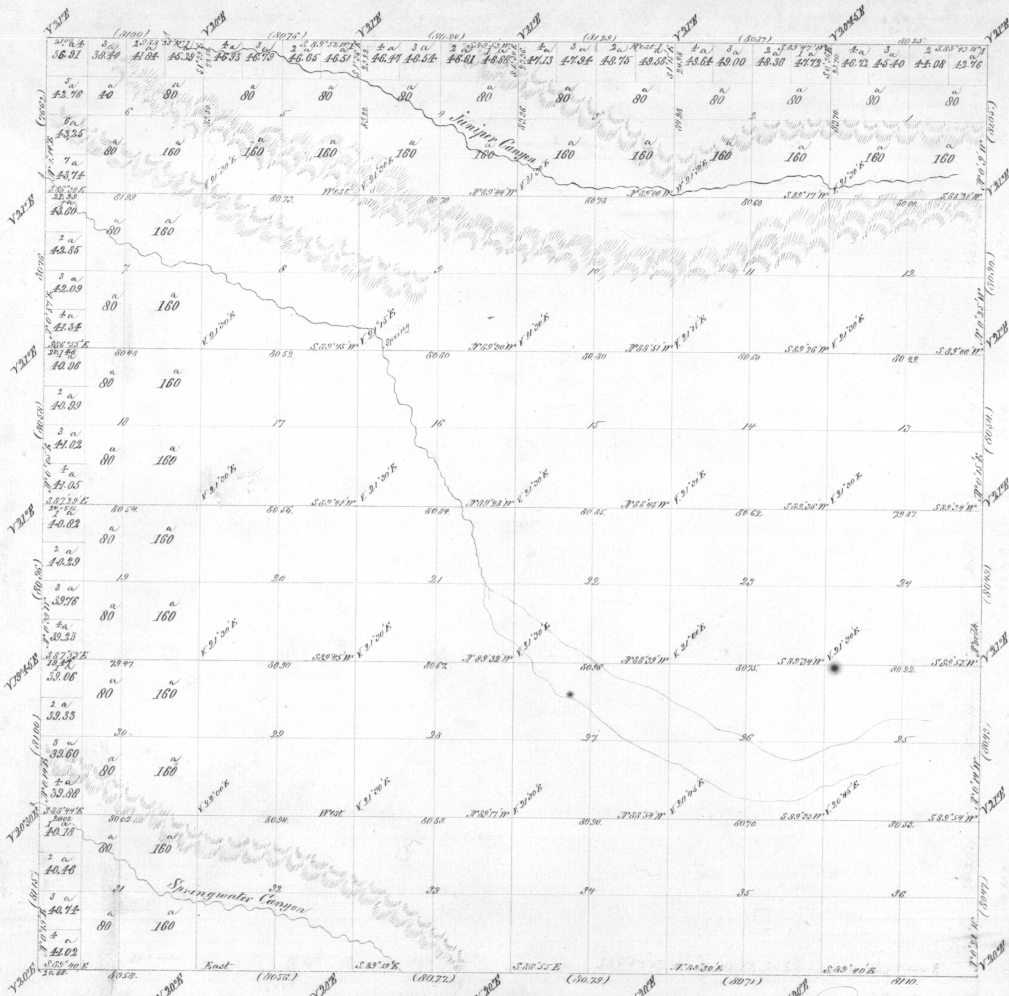


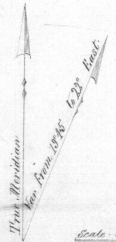
Township 5 North Range 32 East Will Mer Oregon

4059

Area	
Sections	Acres
1	668.96
2	672.72
3	673.38
4	666.30
5	666.84
6	653.18
7	643.88
8	640.00
9	640.00
10	640.00
11	640.00
12	640.00
13	640.00
14	640.00
15	640.00
16	640.00
17	640.00
18	640.00
19	640.00
20	640.00
21	640.00
22	640.00
23	640.00
24	640.00
25	640.00
26	640.00
27	640.00
28	640.00
29	640.00
30	640.00
31	642.84
32	642.84
33	640.00
34	640.00
35	640.00
36	640.00
<b>Total</b>	<b>23305.68</b>



*General Description.*  
 The land on this Township is generally rolling prairie. The soil is rich, well adapted to agriculture as well as grazing purposes. There is water in springs and Chimney Canyon. The Township has no timber. It is covered with heavy bunchgrass.



Lines	Contractor	Contract Date	Amount Surveyed, Mts. Containing Links	Commenced	Completed
Subdivisions	Nicholas O. Walden	20 <sup>th</sup> July 6 <sup>th</sup> 1874	60 29 88	Nov 2 <sup>nd</sup> 1874	Nov 11 <sup>th</sup> 1874

The above Map of the Subdivisional lines of Township 5 North Range 32 East Willamette Mer is hereby conformable to the Original Field notes of the Survey thereof on file in this office, which have been examined and approved  
 Wm. J. Foxworth, County Clerk  
 Willamette Oregon  
 June 23<sup>rd</sup> 1875

Ben Simpson  
 Sec. Genl of Oregon