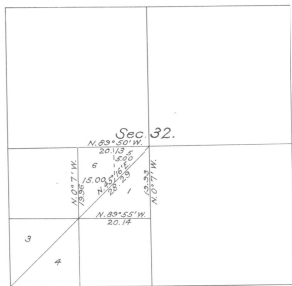


Duplants

Supplemental Plat
of
Sec. 32, T. 5 N., R. 29 E., Will. Mer.,
OREGON.

Scale: 20 chs. = 1 inch.



see G.L.O. Letter dated February 15, 1915 (File 4 A)

1915
Department of the Interior,
General Land Office,
Washington, D.C., February 15, 1915.

This supplemental plat showing the subdivisions of lot 2, Sec. 32, T. 5 N., R. 29 E., Will. Mer., Oregon, shown on plat approved May 22, 1914, is made for the purpose of obtaining the area and legal description of the subdivisions thereof, part of which is to be set aside for community purposes in connection with the Umatilla Project, Oregon.

W. Hallman
Commissioner.