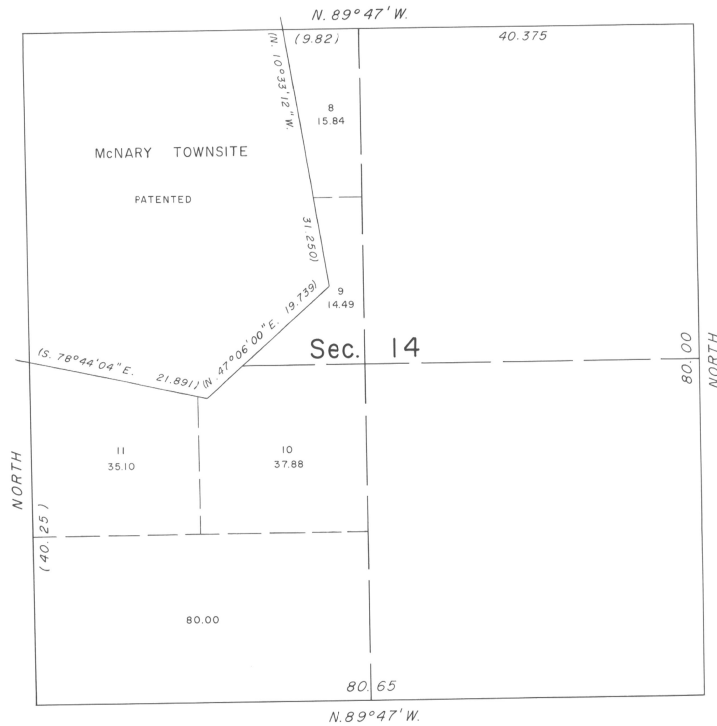


TOWNSHIP 5 NORTH, RANGE 28 EAST, OF THE WILLAMETTE MERIDIAN, OREGON.
 SUPPLEMENTAL PLAT



This plat, showing amended lottings in Section 14, T. 5 N., R. 28 E., Willamette Meridian, Oregon is based upon the plat approved December 7, 1861, the plat accepted August 3, 1959 and the Quitclaim deed number 213349 for McNary townsite, recorded March 4, 1959 in the records of Deeds of Umatilla County, Oregon.

UNITED STATES DEPARTMENT OF THE INTERIOR
 BUREAU OF LAND MANAGEMENT
 Washington, D.C. February 9, 1961

This plat, showing amended lottings, is based upon the official records, and having been correctly prepared in accordance with the regulations, is hereby accepted.

For the Director

Cadastral Engineering Staff Officer