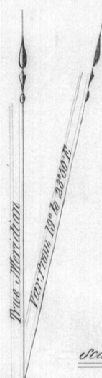
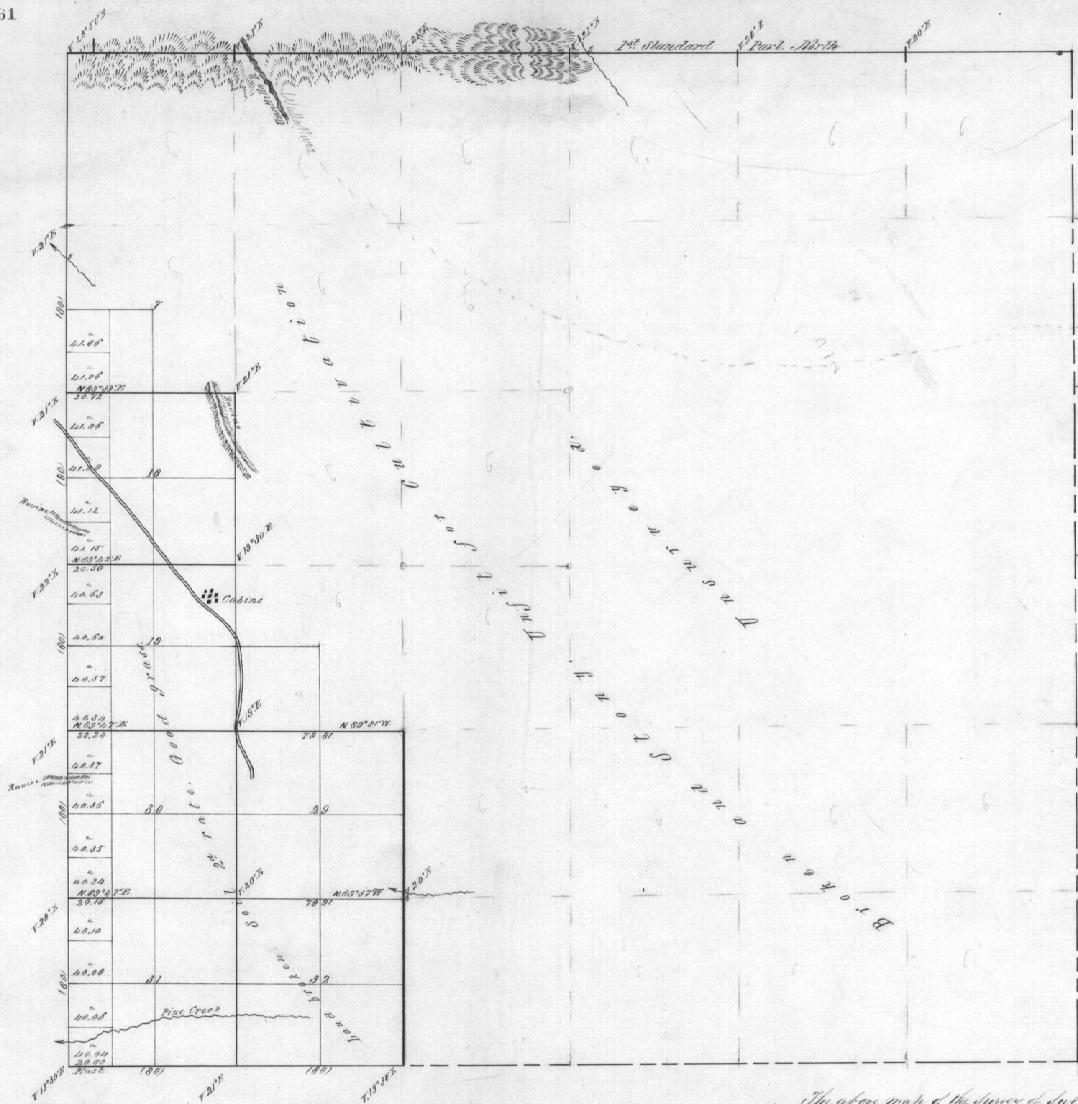


4461



Scale 20 chs to an inch

The above map of the survey of subdivisions of land in Range 37 East Will. Mer. Oregon is returned to the original file of the survey through the office which has been examined & approved. Survey General's Office Eugene Ore. Feb. 10<sup>th</sup> 1887

E. L. Appleton  
Survey Genl. of Oregon.

| Lines        | Contractor          | Contract |                                     | Completed                 |
|--------------|---------------------|----------|-------------------------------------|---------------------------|
|              |                     | No       | Date                                |                           |
| Subdivisions | W. H. Odell         | 1A       | July 8 <sup>th</sup> 1886 12. 01 88 | Oct 22 <sup>nd</sup> 1886 |
|              | Total Acres 4170 58 |          |                                     |                           |