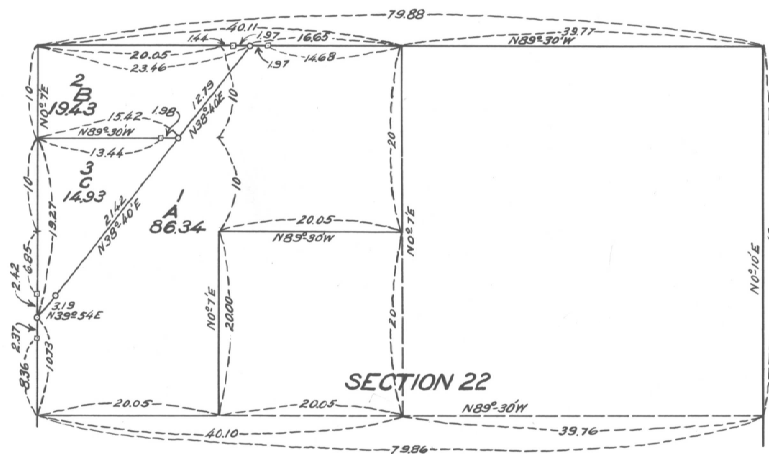


UNITED STATES RECLAMATION SERVICE
 UMATILLA PROJECT OREGON
 TOWNSHIP 4 NORTH, RANGE 28 EAST, WILLAMETTE MER.

AMENDED FARM UNIT PLAT ACCOMPANYING FIELD NOTES
 OF RESUBDIVISION OF FARM UNITS ALONG THE OREGON A.R.
 AND NAVIGATION CO'S TRACK THRU THE N $\frac{1}{2}$ OF SEC. 22.
 SURVEYED MARCH, 1909 BY W. ROY SAXTON, ASST ENGINEER USRS.
 UNDER AUTHORITY OF DEPARTMENTAL INSTRUCTIONS OF OCT. 24, 1906.

7 different plats to 7/24/14



EXPLANATION

DISTANCES ARE SHOWN IN CHAINS.
 MERIDIAN CORNERS ARE SHOWN THUS:
 WITNESS CORNERS ARE SHOWN THUS:
 LOT NUMBERS ARE SHOWN THUS:
 FARM UNIT LETTERS ARE SHOWN THUS:
 TOTAL ACRES IN EACH FARM UNIT SHOWN THUS: 1322



THE ABOVE DIAGRAM OF THE SURVEY OF FARM UNITS BORDERING
 ON THE O. R. R. & N. CO.'S TRACK IN SEC. 22, T. 4 N., R. 28 E., W. M. OREGON,
 EXECUTED UNDER AUTHORITY OF DEPARTMENTAL INSTRUCTIONS OF
 OCTOBER 24, 1906, IS CORRECT AND ACCORDING TO THE FIELD NOTES
 ON FILE IN THIS OFFICE, WHICH HAVE BEEN EXAMINED AND APPROVED.

U. S. RECLAMATION SERVICE,
 WASHINGTON, D. C., May 2, 1909.

Morris Beer
 ACTING DIRECTOR.

Beas
 DEPARTMENT OF THE INTERIOR
 GENERAL LAND OFFICE
 WASHINGTON, D. C., June 8, 1909.

THE ABOVE DIAGRAM OF THE SURVEY OF FARM UNITS BORDERING
 ON THE O. R. R. & N. CO.'S TRACK IN SECTION 22, T. 4 N., R. 28 E., W. M.
 OREGON, IS CONFORMABLE TO THE FIELD NOTES WHICH HAVE BEEN
 EXAMINED AND ACCEPTED.

Fred Dunnett
 COMMISSIONER.

ACCESSION NO. 108