

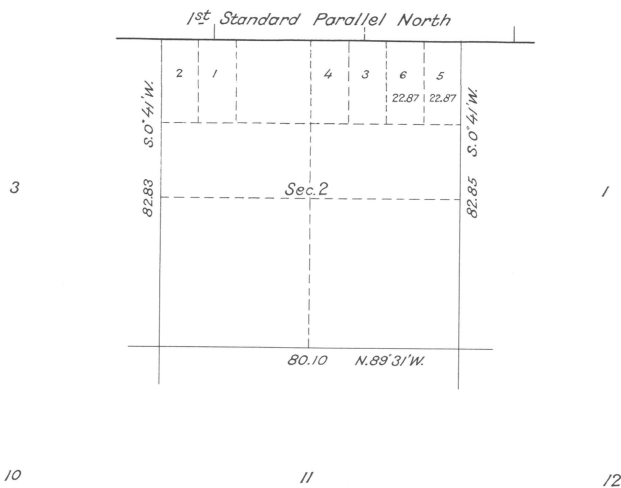
SUPPLEMENTAL PLAT
OF
Section 2 - Township N^o 4 North, Range N^o 28 East of the Willamette Meridian, Oregon.

Scale: 20 chains to an inch

34

35

36



Accepted by the Hon. Commissioner G.L.O. March 24, 1922.

U. S. Surveyor General's Office,
Portland, Oregon, Feb. 27, 1922.

The above supplemental plat, made in order to accommodate homestead entry, LaGrande 082628, of Anton Soneson, embracing in part the NE¹/₄ NE¹/₄ of Section 2, T. 4 N., R. 28 E., Willamette Meridian, Oregon; is prepared in accordance with instructions contained in Commissioner's letter "B" (SAB) dated Feb. 18, 1922.

Wesley W. Carviss
U. S. Surveyor General of Oregon.