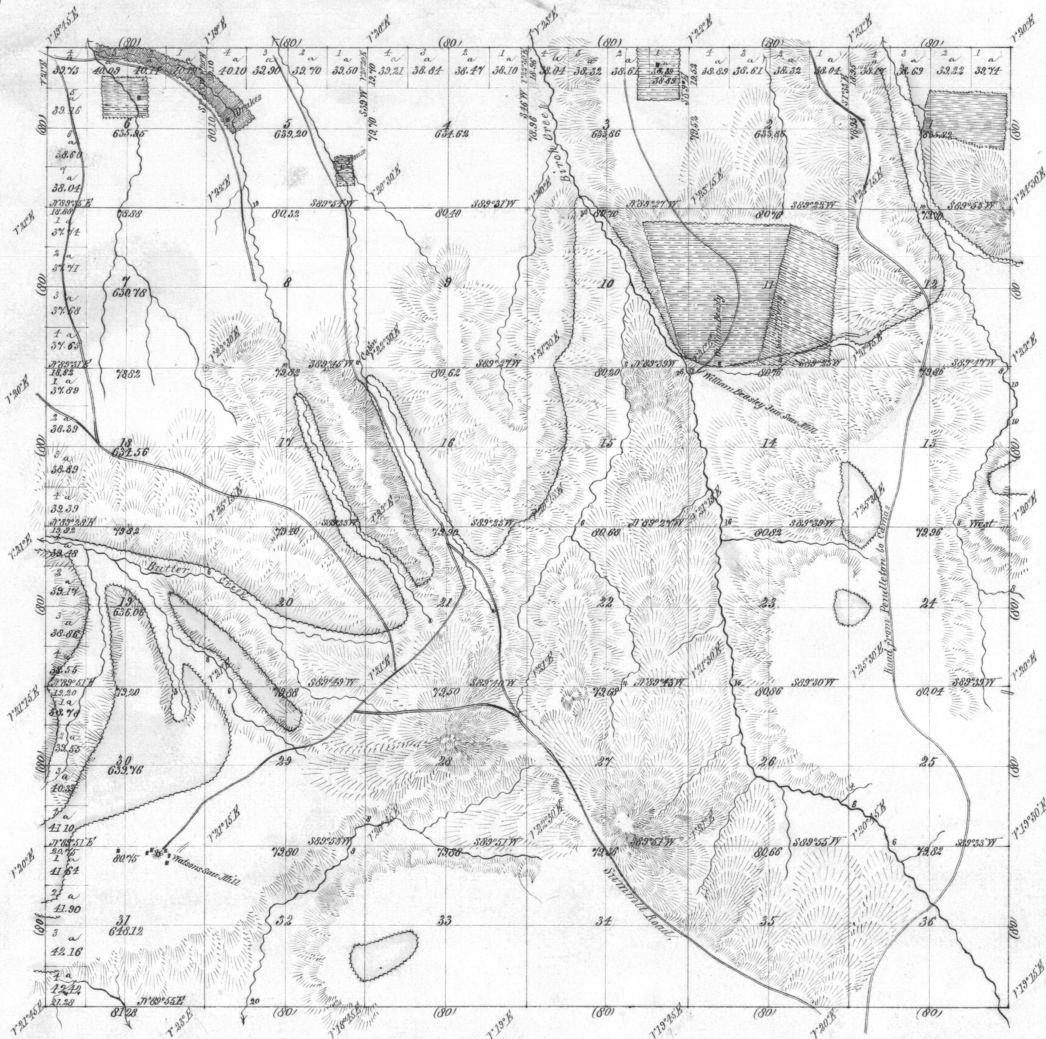
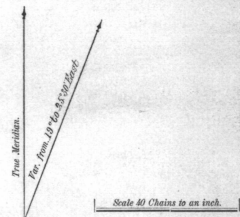


Deposited to Credit of United States in the 1<sup>st</sup> Terminal Bank Portland Or. March 27 1879 by  
 J. W. Watson, For Field Work 200 00  
 John Lubbs do do 200 00  
 J. M. Ulrich do do 775 00  
 do do do Office 750 00  
 Total 1925 00



*General Description*  
 The surface of this Township is nearly all mountainous, Secs. 4, 5, 6, 7, 8, 9 and the N.W. 1/4 of Sec. 10 are perfectly high rolling prairie. The summit of the Western spur of the Blue Mountains extends through the southern portions of the Township, causing a small portion to slope southward. The canyons are deep and the slopes steep and high. The soil is mostly 2<sup>nd</sup> rate and not adapted to farming in many places. There are small tracts of from 1/2 to 100 Acres that would produce well, the soil being good 2<sup>nd</sup> rate. There is quite a large amount of 2<sup>nd</sup> rate; nearly all the first rate is already claimed. The timber is generally thick on the ground, but the trees are not generally of large size. Pine is most plentiful, Shumacher and Fir also abound. The principal woodstock consists of herds of young Deer, Fox and Shumacher. There is only a small amount of Horses.

Total Acres 28002.59



Lines.	Contractor.	Contract.		Amount Surveyed.			Commenced.	Completed.
		No.	Date.	Miles.	Chains.	Links.		
Subdivisions Timber do Prairie Extensions	George S. Pershing do do do	519	March 26 1879	5.1	7.9	86	April 30 1879	May 19 1879
		502	Total	5.9	7.8	08		

The above Map of the subdivisional lines of Township No. 3 South Range No. 31 East Willamette Meridian, Oregon, is strictly conformable to the original field notes of the survey thereof on file in this office, which have been examined and approved.  
 U. S. Surveyor General's Office,  
 Portland, Oregon, June 3<sup>rd</sup> 1879  
*J. M. Wilson*  
 Surveyor General of Oregon.