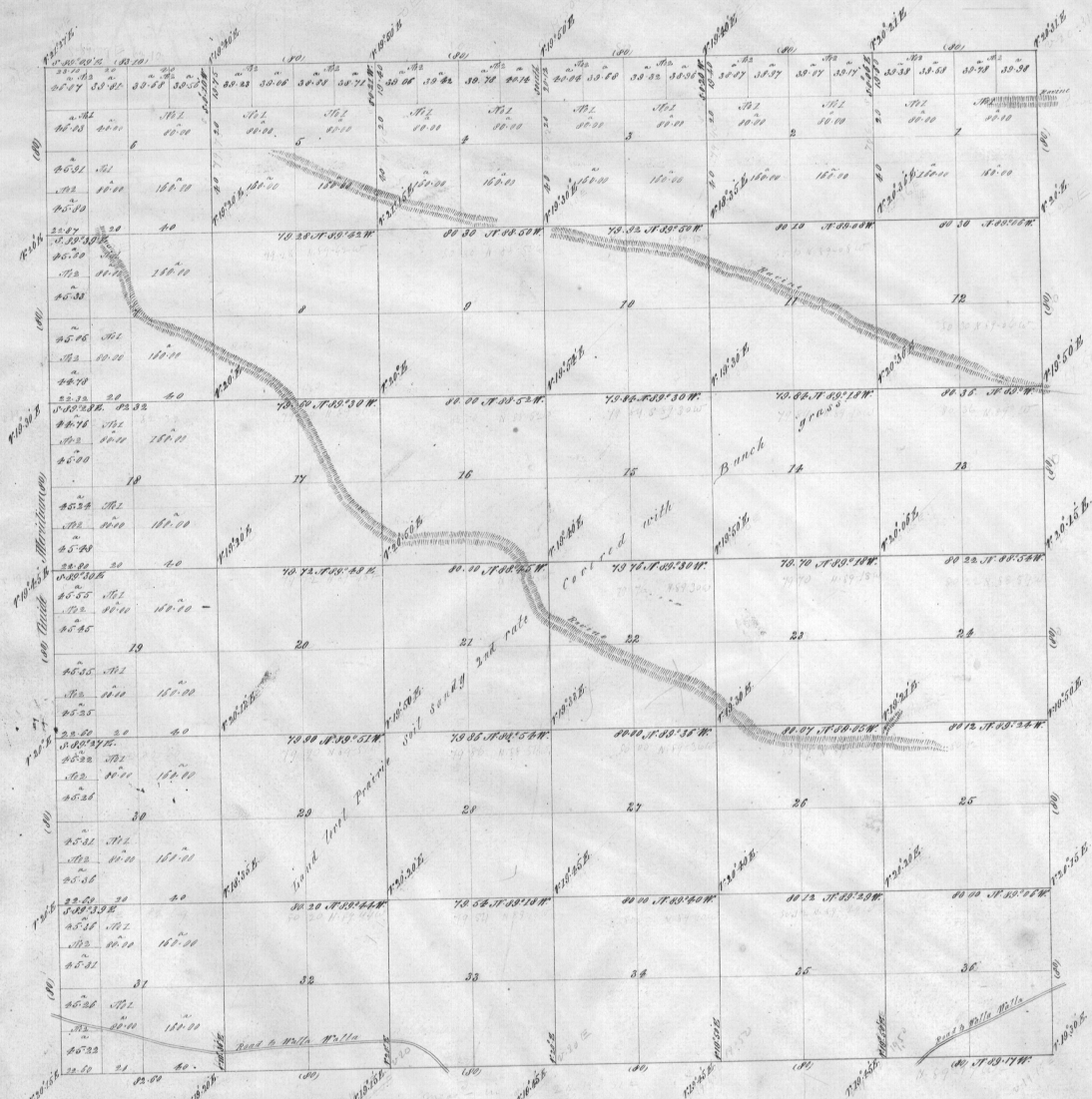


Township No 3, North Range No 31 East Willamette Meridian

Comp. with Field Notes

4002



in a 46  
 12 03 10 4  
 07 54  
 Co. 10. 40  
 2055-05  
 all checked



Scale 40 Chains to an inch

Surveys designated	By whom surveyed	Particular		Acut. of survey	When surveyed	Index reference notes to see Case Office
		No.	Date			
Exterior lines F.F.B. lds.	Duffins S. Peque	100	August 2d 1862	72 63 10	Comm. Dec. 24th 1862	Mar. 4th 1867
Subdivisions	"	"	"	60 10 30	Finis April 31st "	"
Map number of Series	23155-01					

The above Map of Township No 3, North Range No 31 East, of the Willamette Meridian Oregon, is strictly conformable to the field notes of the survey thereof on file in this Office, which have been examined and approved.

Surveyor General's Office  
 Eugene City December 7th 1867

J. P. Rogers  
 Sur. Gen. of Oregon.