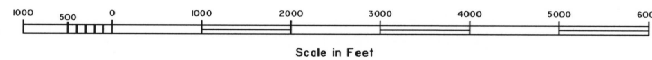
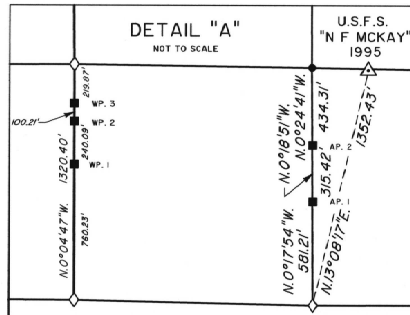
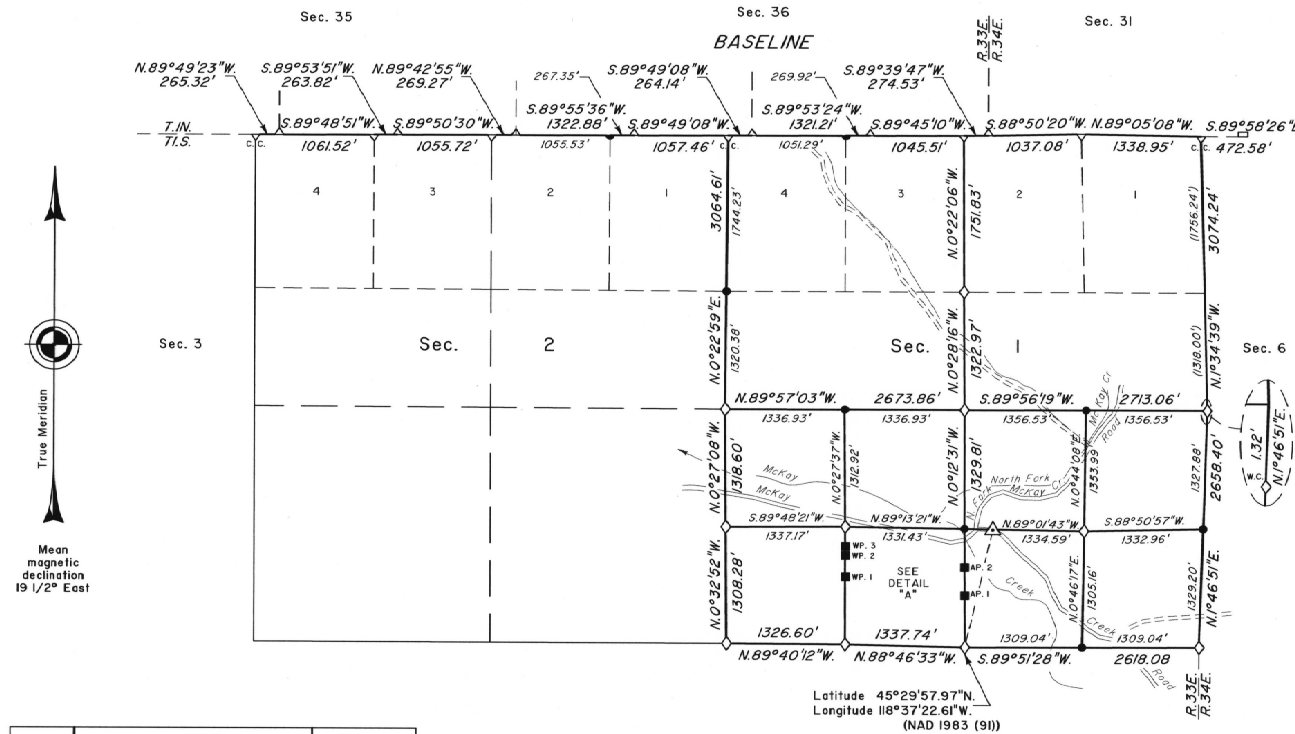


TOWNSHIP I SOUTH, RANGE 33 EAST, OF THE WILLAMETTE MERIDIAN, OREGON

DEPENDENT RESURVEY AND SUBDIVISION OF SECTION I



A history of surveys is contained in the field notes.

This plat represents a dependent resurvey of a portion of the Willamette Baseline through ranges 33 and 34 east boundary and subdivisional lines, T. 1 S., R. 33 E., Willamette Meridian, Oregon, designed to restore the corners in their true original locations according to the best available evidence, and the subdivision of section 1.

Measured distances and directions have been adjusted by Cadastral Measurement Management for Windows (WinCMM), computer software that incorporates a least squares adjustment routine. The adjusted bearings and distances are reported to the nearest second and 0.01 foot.

The lottings and areas are as shown on the plat approved June 14, 1890.

The survey was executed by Bryan S. Seibold, Cadastral Surveyor, beginning June 2, 1999, and completed May 18, 2000, pursuant to Special Instructions dated May 19, 1999, under Group Number 1915, Oregon.

Timber in this area consists of pine and cottonwood.

The tie to the geodetic control station is reported as mean bearing and sea level distance.

LEGEND

- ◊ Original corner previously remonumented
- Corner previously established or reestablished
- Corner previously established or reestablished remonumented this survey
- Corner established or reestablished this survey

UNITED STATES DEPARTMENT OF THE INTERIOR
BUREAU OF LAND MANAGEMENT

Portland, Oregon July 24, 2002

This plat is strictly conformable to the approved field notes, and the survey, having been correctly executed in accordance with the requirements of law and the regulations of this Bureau, is hereby accepted.

For the Director

Mare L. Thomas
acting
Chief Cadastral Surveyor of Oregon