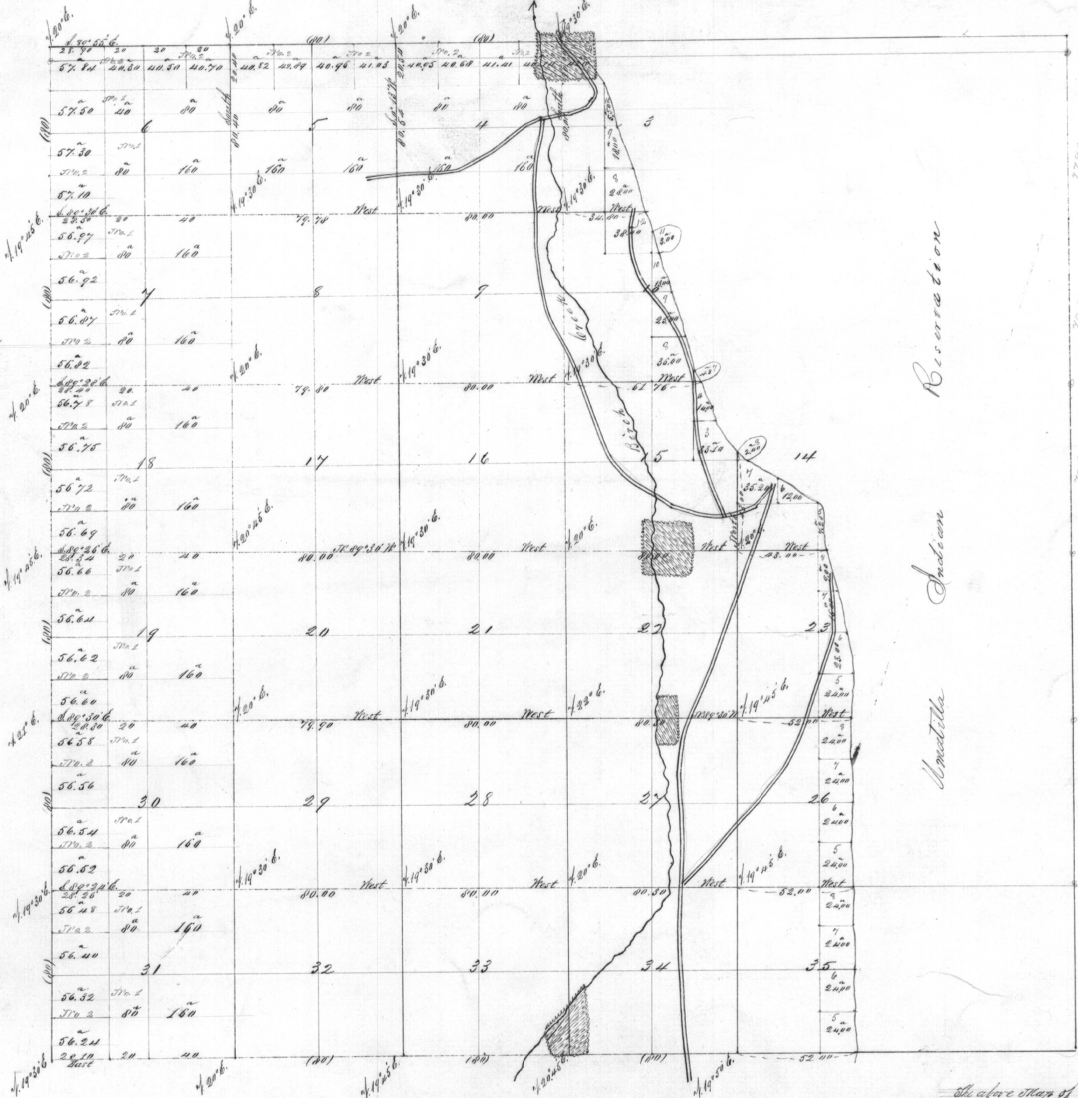


Township 1 North Range 32 East



Total Acres 16206-47

Beers, Oregon
Anderson
Amelia

I certify that the letters and coverage, consequent upon the survey of the boundaries of the land of Anderson, Oregon in S. 1 T. 1 N. R. 32 E. Hill, Oregon as expressed in the plat is correct. U. S. Surveyor General's Office Eugene City



The above plat of S. 1 T. 1 N. R. 32 E. Hill, Oregon is strictly conformable to the original field notes of the survey thereof on file in this Office which have been examined and approved. U. S. Surveyor General's Office Eugene City

Sur. Genl Oregon