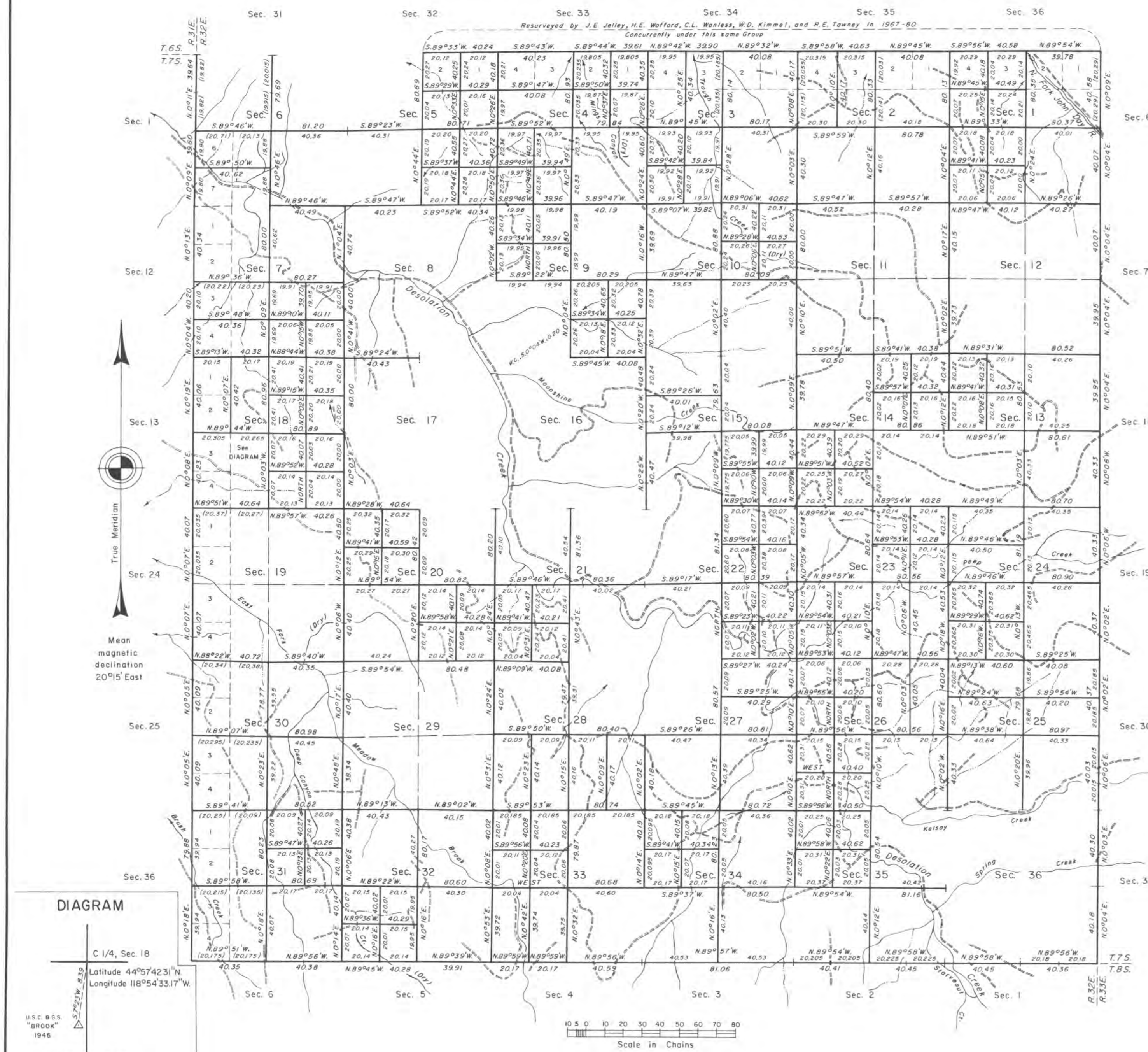


TOWNSHIP 7 SOUTH, RANGE 32 EAST, OF THE WILLAMETTE MERIDIAN, OREGON.

DEPENDENT RESURVEY AND SUBDIVISION OF SECTIONS



A history of surveys is contained in the field notes.

This plat represents a dependent resurvey of the south, east, and west boundaries, and a portion of the subdivision lines, T. 7 S., R. 32 E., Willamette Meridian, Oregon, designed to restore the corners in their true original locations according to the best available evidence, and the subdivision of certain sections.

The lottings and areas are as shown on the plat approved December 8, 1881.

The survey was executed by James E. Jelley, Harvey E. Wofford, Rick E. Tawney, Thomas E. Caster, and Scott R. McMullin, Cadastral Surveyors, beginning August 24, 1967 and completed July 28, 1982, pursuant to Special Instructions dated May 3, 1957 and June 16, 1967, and Supplemental Special Instructions dated July 25, 1978, for Group Nos. 350 and 643, Oregon.

Timber in this area consists of pine, fir, larch, juniper, spruce, and alder.

UNITED STATES DEPARTMENT OF THE INTERIOR
BUREAU OF LAND MANAGEMENT
Portland, Oregon June 30, 1983

This plat is strictly conformable to the approved field notes, and the survey, having been correctly executed in accordance with the requirements of law and the regulations of this Bureau, is hereby accepted.

For the Director

William W. Glenn
Chief Cadastral Surveyor of Oregon