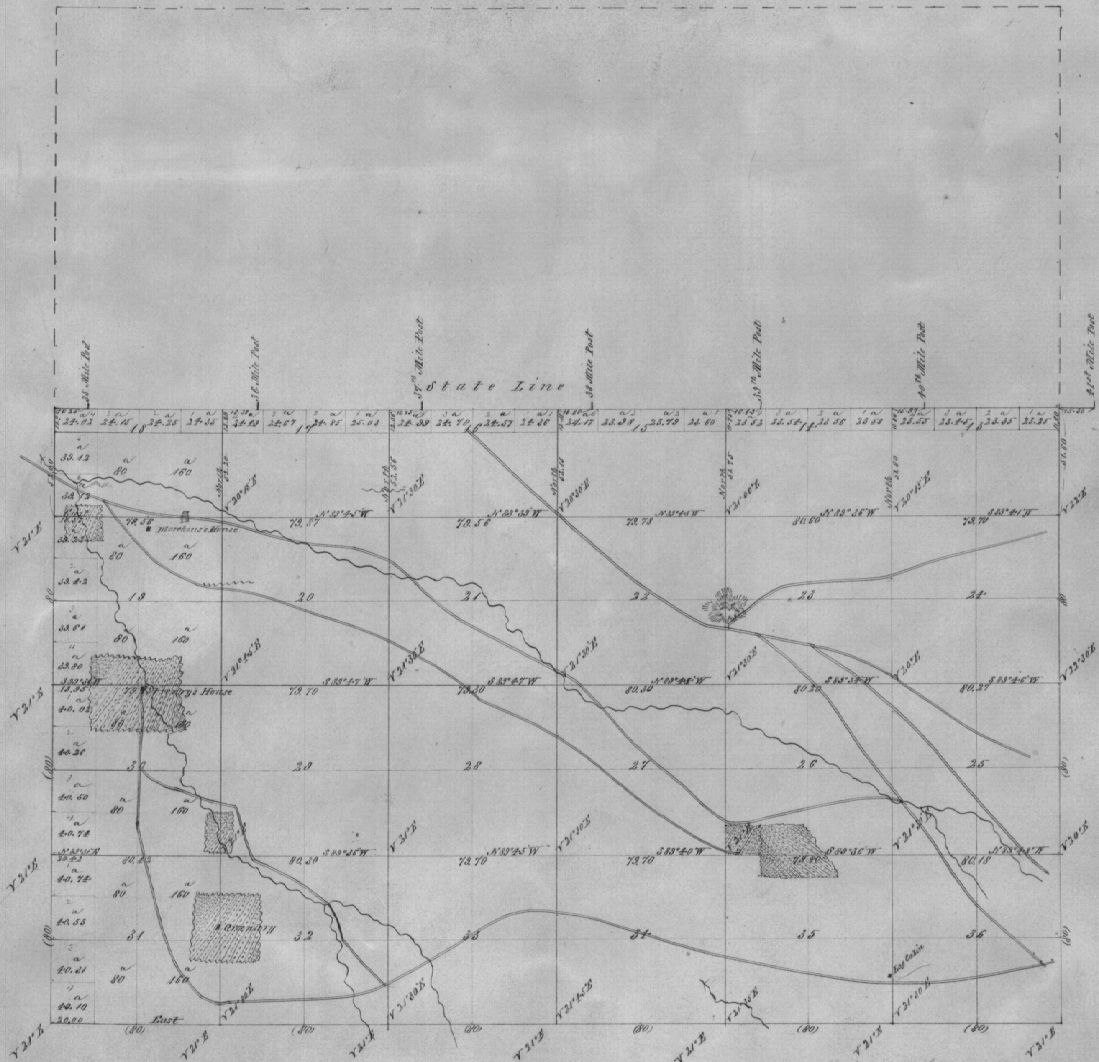


Township 6 North Range 37 East

Section	Area
1	361.20
2	361.20
3	361.20
4	361.20
5	361.20
6	361.20
7	361.20
8	361.20
9	361.20
10	361.20
11	361.20
12	361.20
13	361.20
14	361.20
15	361.20
16	361.20
17	361.20
18	361.20
19	361.20
20	361.20
21	361.20
22	361.20
23	361.20
24	361.20
25	361.20
26	361.20
27	361.20
28	361.20
29	361.20
30	361.20
31	361.20
32	361.20
33	361.20
34	361.20
35	361.20
36	361.20
37	361.20
38	361.20
39	361.20
40	361.20
41	361.20
42	361.20
43	361.20
44	361.20
45	361.20
46	361.20
47	361.20
48	361.20
49	361.20
50	361.20
51	361.20
52	361.20
53	361.20
54	361.20
55	361.20
56	361.20
57	361.20
58	361.20
59	361.20
60	361.20
61	361.20
62	361.20
63	361.20
64	361.20
65	361.20
66	361.20
67	361.20
68	361.20
69	361.20
70	361.20
71	361.20
72	361.20
73	361.20
74	361.20
75	361.20
76	361.20
77	361.20
78	361.20
79	361.20
80	361.20
81	361.20
82	361.20
83	361.20
84	361.20
85	361.20
86	361.20
87	361.20
88	361.20
89	361.20
90	361.20
91	361.20
92	361.20
93	361.20
94	361.20
95	361.20
96	361.20
97	361.20
98	361.20
99	361.20
100	361.20
Total	36120.00



General Description
 This Township is marked out with dept. corners which bear S. 88° 28' E. etc. soil on the ridge is generally good, the Eastern portion is high up on the Blue Mountains, the Western is more level being near the foot of the mountains. The soil is excellent and is being rapidly settled. The timber consists of Fir, Tamarac, Spruce, Hemlock, Alder, Cottonwood and Willow.

Since	Contractor	Contract No.	Contract Date	Amount Surveyed Miles Chain Links	Commenced	Completed
Subdivisions	George Williams	197	July 20 1892	38 10 15	October 17 1892	October 25 1892
International State Line				1 01 31		
				20660 37 24 04		

The above copy of the Subdivisional lines of Grant Township 6 North Range 37 East Willamette Division Oregon is hereby conformable to the original field notes of the survey made on file in this Office which have been examined and approved.
 U.S. Surveyor General's Office
 Oregon City, Oregon
 September 15 1893

W. F. Odell
 District of C.