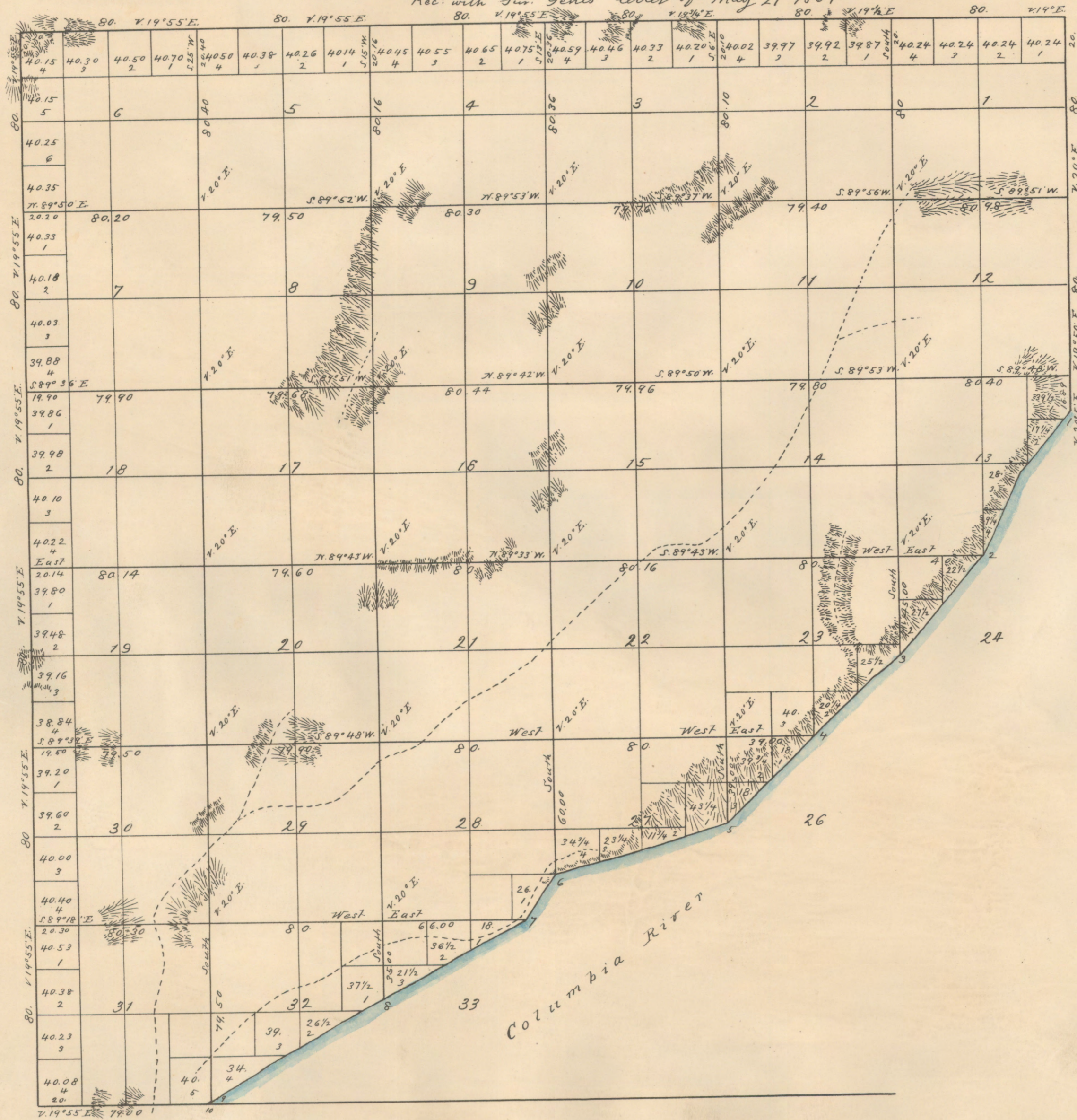


6-30-A

Township No. 6 North Range No. 30 East Willamette Meridian.

Rec'd with Sur. Gen's letter of May 21 1867



Department of the Interior
General Land Office

Nov 20 - 1863

I hereby certify that the above is a true photo-lithographic copy of the original on file in this Office.

W. H. H. H. H.
Notary Commissioner

Surveys designated.	By whom surveyed	Contract		Cont. of surveys			When Surveyed	When chargeable in the Surveyor Gen's Accts
		No.	Date	Miles	Chains	Links		
Subdivisions	Jesse Richardson	88	24 th Sept 1866	49	4	44	April 6 th 1867.	4 th Quarter 1867
Meanders.	"	"	"	6	39	40	"	"
Total No. of Acres 18,184.18								

The above map of Township No. 6 North of Range No. 30 East of the Willamette Meridian in the Territory of Washington is strictly conformable to the field notes of the survey thereof on file in this Office which have been examined and approved.

Surveyor General's Office.
Olympia W. T. May 21st 1867.
S. Searfield
Sur. Gen. W. T.