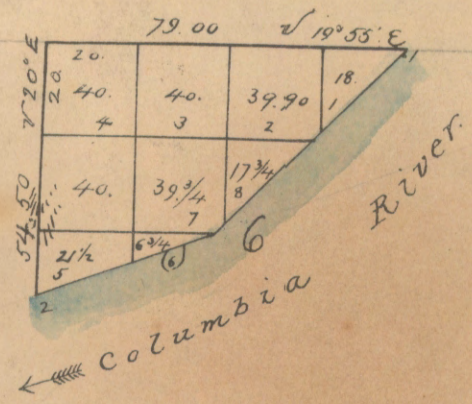


5-30-A

Township No 5 North Range No 30 East Willamette Meridian



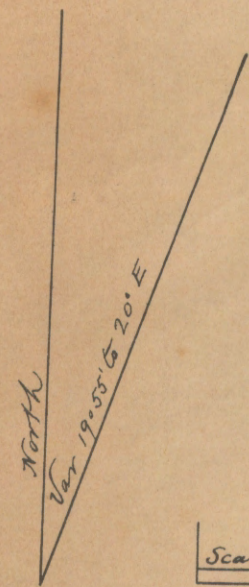
Recd with S. G. letter of August 31st 1867

Department of the Interior
General Land Office

Jan. 25th 1884.

I hereby certify that the above is a true photo-lithograph copy of the original on file in this Office.

W. M. ...
Acting Commissioner.



Scale 40 Chs to an Inch

Surveys designated	By whom Surveyed	Contract		Acut of Surveys			When Surveyed	When changed on the Sur Genls account
		No	Date	Miles	Chains	Links		
Meanders	Edward Giddings	90	27 th December 1866	1	18	00	14 th April 1867	1 st Qr 1868.
Total No of Acres	263.65							

The above Map of Township No 5 North of Range No 30 East of the Willamette Meridian in the Territory of Washington is strictly conformable to the field notes of the Survey thereof on file in this Office which have been examined and approved

Surveyor General's Office
Olympia W. T. August 31st 1867

G. Garfield
Surveyor General of W. T.