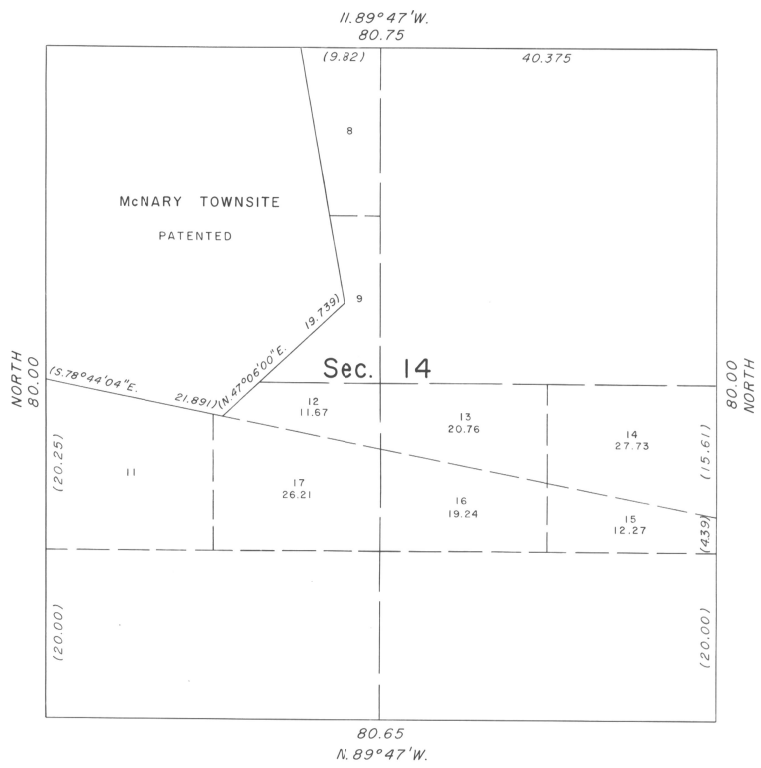
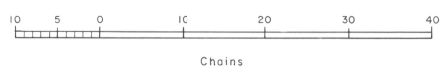


TOWNSHIP 5 NORTH, RANGE 28 EAST, OF THE WILLAMETTE MERIDIAN, OREGON.
SUPPLEMENTAL PLAT



This plat, showing amended lottings, is based upon the supplemental plat accepted February 9, 1961, the plat approved December 7, 1861, and the Quitclaim Deed No. 213349 for McNary Townsite. It is also based upon DRG. No. 6B-26-13 of the Oregon State Highway Commission, from which the distance from the southeast corner of section 14 to the centerline of U. S. Highway No. 730 (24.39 chains) was obtained.



UNITED STATES DEPARTMENT OF THE INTERIOR
BUREAU OF LAND MANAGEMENT
Washington, D. C. April 28, 1966

This plat, showing amended lottings, is based upon the official records, and having been correctly prepared in accordance with the regulations, is hereby accepted.

For the Director
E. L. Remington
Chief, Division of Engineering