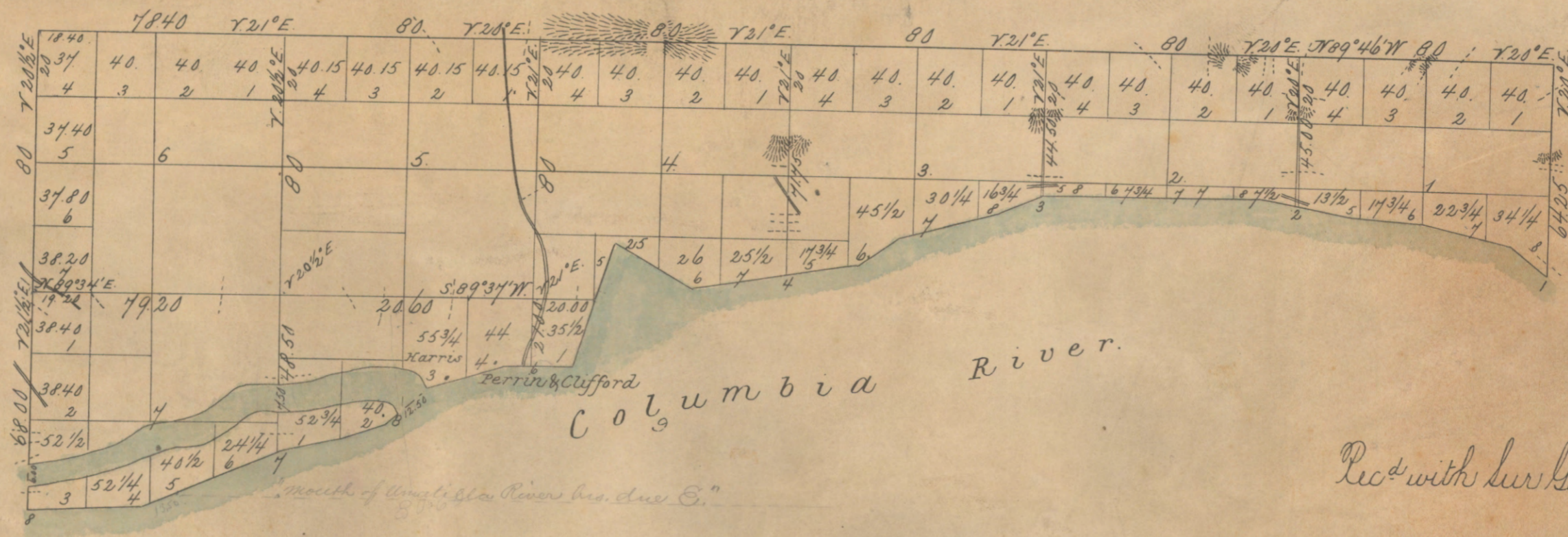


5-28-A

Township No. 5 North Range No. 28 East Willamette Meridian.



Rec^d with Sur. Genl's letter, May 31st 1864.

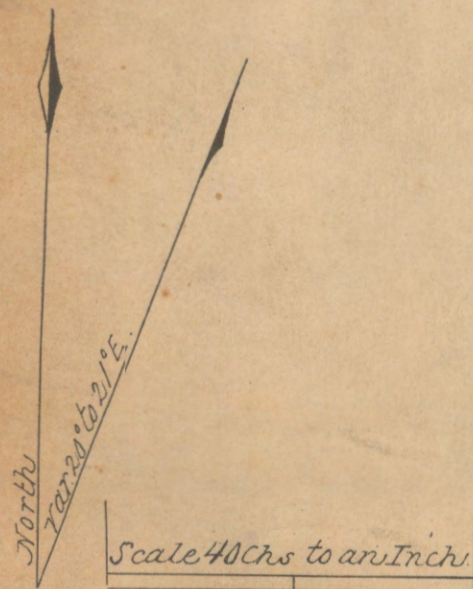
These by copy that they show in a true photo-lithographic
 copy of the original on file in this office

Department of the Interior

General Land Office

Dec 22nd 1883

Wm. J. ...
 Comm. Genl.



Surveys designated	By whom surveyed	Contract		Comp. of surveys		When surveyed	When charged to the Surveyor Genl's acct
		No.	Date	Miles	Chains		
N. & P. Boundaries	Edward Liddings	90	24 th Dec. 1866	7	66	40	22 nd March 1867
Subdivisions	"	5	15 th March 1867	4	10	55	16 th April 1867
Meaders	"	"	"	6	48	25	"
Total No of Acres							

The above maps of Township No. 5 North of Range
 No. 28 East of the Willamette Meridian in the Territory of Washington
 strictly conformable to the field notes of the survey there of on file in this
 office which have been examined and approved.
 Surveyor General's Office.
 Olympia W.T. May 31st 1864.

Lt. arfield
 Sur. Genl. W.T.