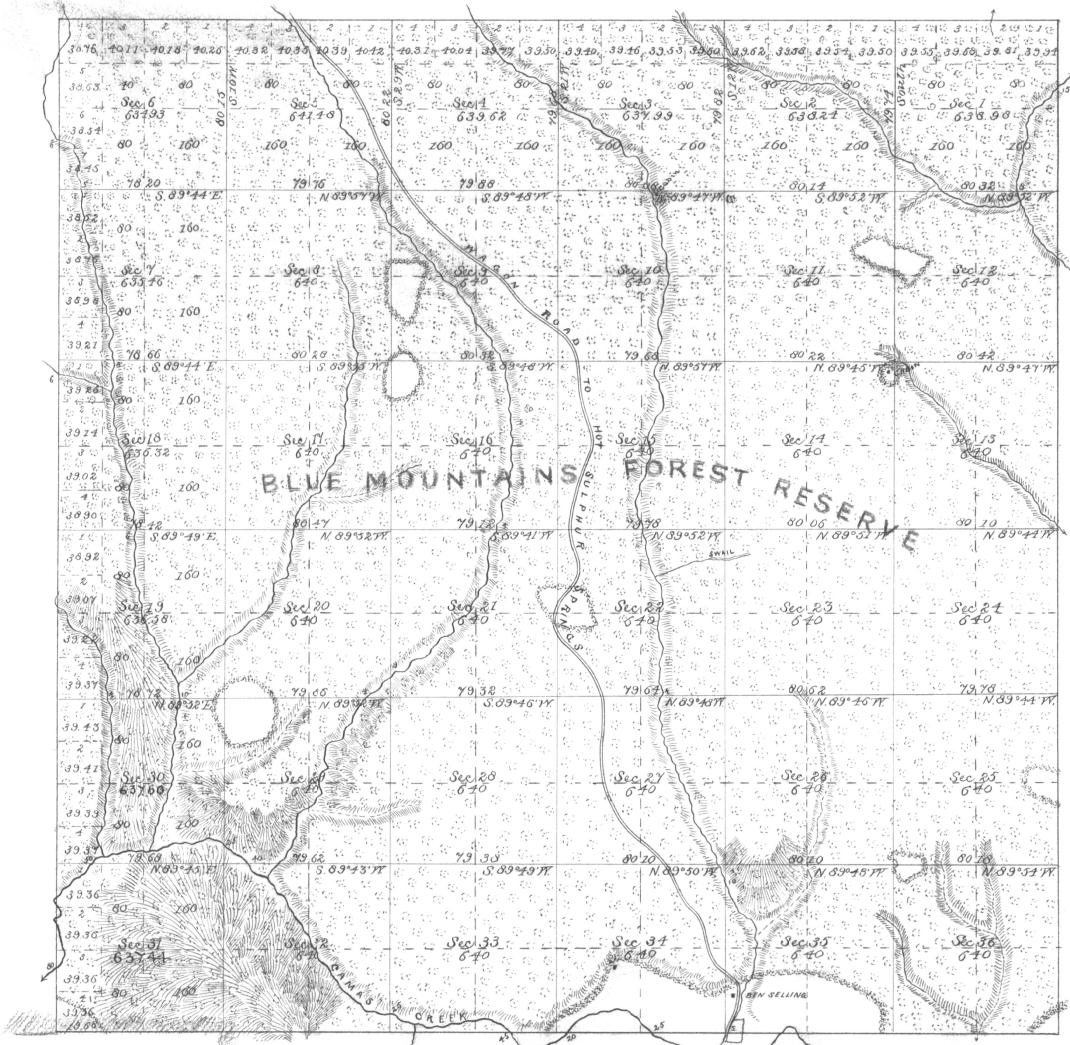
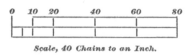


Township No. 4 South Range No. 33 East Willamette Meridian, Oregon.



SURVEYS DESIGNATED.	BY WHOM SURVEYED.	NO.	DATE OF CONTRACT.	AMOUNT OF SURVEYS.			WHEN SURVEYED.	MEAN DECLINATION.
				Mis.	Chains.	Lis.		
Township Lines Subdivisions	George S. Perkins do do do	410 do do	July 23, 1881 do do do	59	72	52	Sept. 12 to 22, 1881	20° 30' E



The above Map of the Subdivisions of Township No. 4 South of Range No. 33 East of the Willamette Meridian, Oregon, is strictly conformable to the Field Notes of the survey thereof on file in this Office, which have been examined and approved.

U. S. Surveyor-General's Office,
Portland, Oregon,
December 1, 1881. James C. Talman
Surveyor-General of Oregon.