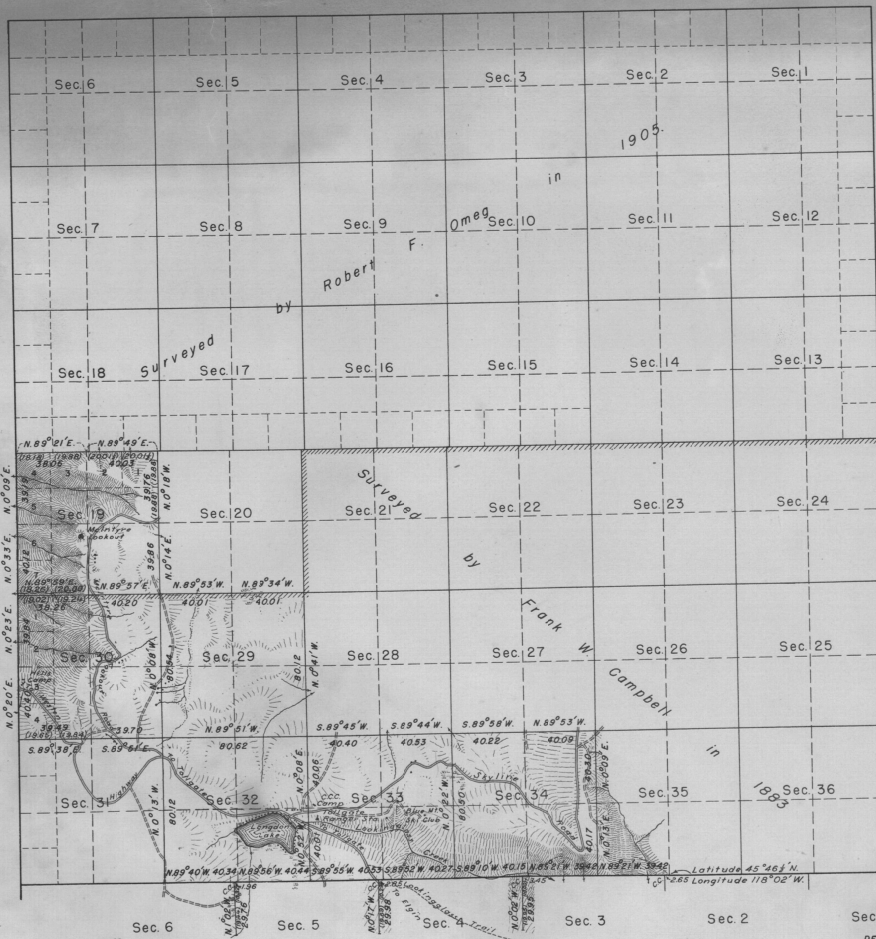


## TOWNSHIP N° 4 NORTH, RANGE N° 38 EAST, OF THE WILLAMETTE MERIDIAN, OREGON.

DEPENDENT RESURVEY



THIS PLAT OF THE RESURVEY OF SECTIONS 19, 29, 30, 32, 33, AND 34, T. 4 N., R. 38 E., DELINEATES A RETRACEMENT AND RE-ESTABLISHMENT OF THE LINES OF THE ORIGINAL SURVEYS AS SHOWN UPON THE PLATS APPROVED JANUARY 7, 1934 AND JANUARY 5, 1906, IN THEIR TRUE ORIGINAL POSITION ACCORDING TO THE BEST AVAILABLE EVIDENCE OF THE POSITION OF THE ORIGINAL CORNERS; ALL DIFFERENCES BETWEEN THE MEASUREMENTS SHOWN ON THE ORIGINAL PLATS AND THOSE DERIVED IN THE RETRACEMENT HAVE BEEN DISTRIBUTED PROPORTIONALLY BETWEEN ACCEPTED CORNERS IN ACCORDANCE WITH SURVEYING RULES; REFERENCE WILL BE MADE TO THE ORIGINAL PLATS FOR THE SHOWING OF THE AREAS AND MORE DETAILED DESCRIPTIONS OF THE VARIOUS SMALLER SUBDIVISIONS. RESURVEY AUTHORIZED BY LETTER "E" 1763842 DATED APRIL 21, 1939.

Mean Magnetic Declination, 2° 00' E. Scale: 40 Chains to an Inch. Area Resurveyed, 3,819.24 Acres.

LINES DESIGNATED	BY WHOM SURVEYED	GROUP N°	DATE	MILEAGE		WHEN SURVEYED	
				MLS.	CHS.	BEGUN	COMPLETED
Exterior	Otis O. Gould	234	July 11, 1939	5	40.12	Aug. 5, 1939	Aug. 22, 1939
Subdivisional				15	8.75		

OFFICE OF THE SUPERVISOR OF SURVEYS  
DENVER, COLORADO, AUGUST 16, 1940  
THE ABOVE PLAT OF TOWNSHIP NO. 4 NORTH, RANGE NO. 38 EAST,  
OF THE WILLAMETTE MERIDIAN, OREGON, IS STRICTLY CONFORMABLE  
TO THE FIELD NOTES OF THE SURVEY THEREOF, WHICH HAVE BEEN  
EXAMINED AND APPROVED.

*Wm. H. Johnson*

SUPERVISOR OF SURVEYS.

UNITED STATES  
DEPARTMENT OF THE INTERIOR  
GENERAL LAND OFFICE  
WASHINGTON, D. C., MAY 21, 1941.  
THE SURVEY REPRESENTED BY THIS PLAT  
HAVING BEEN CORRECTLY EXECUTED IN ACCORDANCE  
WITH THE REQUIREMENTS OF LAW AND THE REGULATIONS  
OF THIS OFFICE, IS HEREBY ACCEPTED.

*John O. Stewart*  
ACTING ASSISTANT COMMISSIONER.