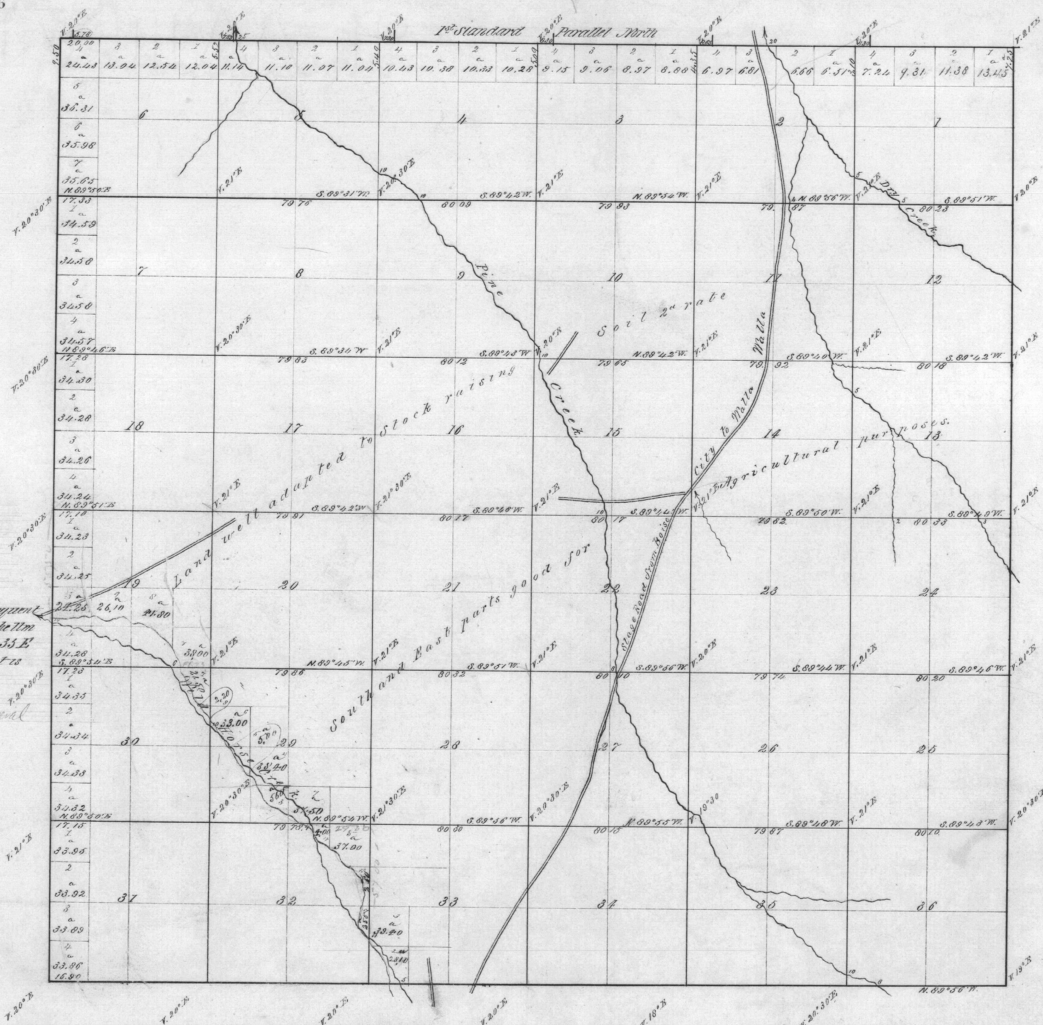


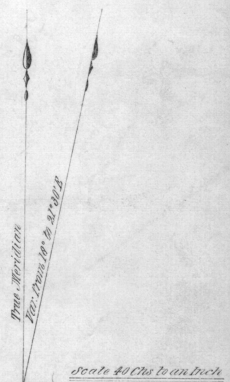
Township No 4 North Range No 35 East Will. Mer.

4316



Total Acres 20213.91

I certify that the latitudes and bearings consequent upon the measure of the east boundary of the town of the Indian Reservation in T. 4 N. R. 35 E. Will. Mer. Oregon as expressed on this plat is correct.  
 Surveyor General's Office Will. Mer.  
 Eugene City June 1<sup>st</sup> 1882 Surveyor General



Lines	Contractor	Contract		Acres surveyed	Completed
		No.	Date		
Subdivisions	H. H. Odell	114	July 25 1886	53 51 58	Aug. 25 <sup>th</sup> 1888
	Total Acres 20206.23				

The above map of the survey of subdivisions lines of T. 4 N. Range 35 East Will. Mer. Oregon as already mentioned to the Oregon State Surveyor General's Office is hereby approved and approved.  
 Surveyor General's Office  
 Eugene City Feb 6 1887

E. L. Applegate  
 Surveyor Genl. of Oregon.