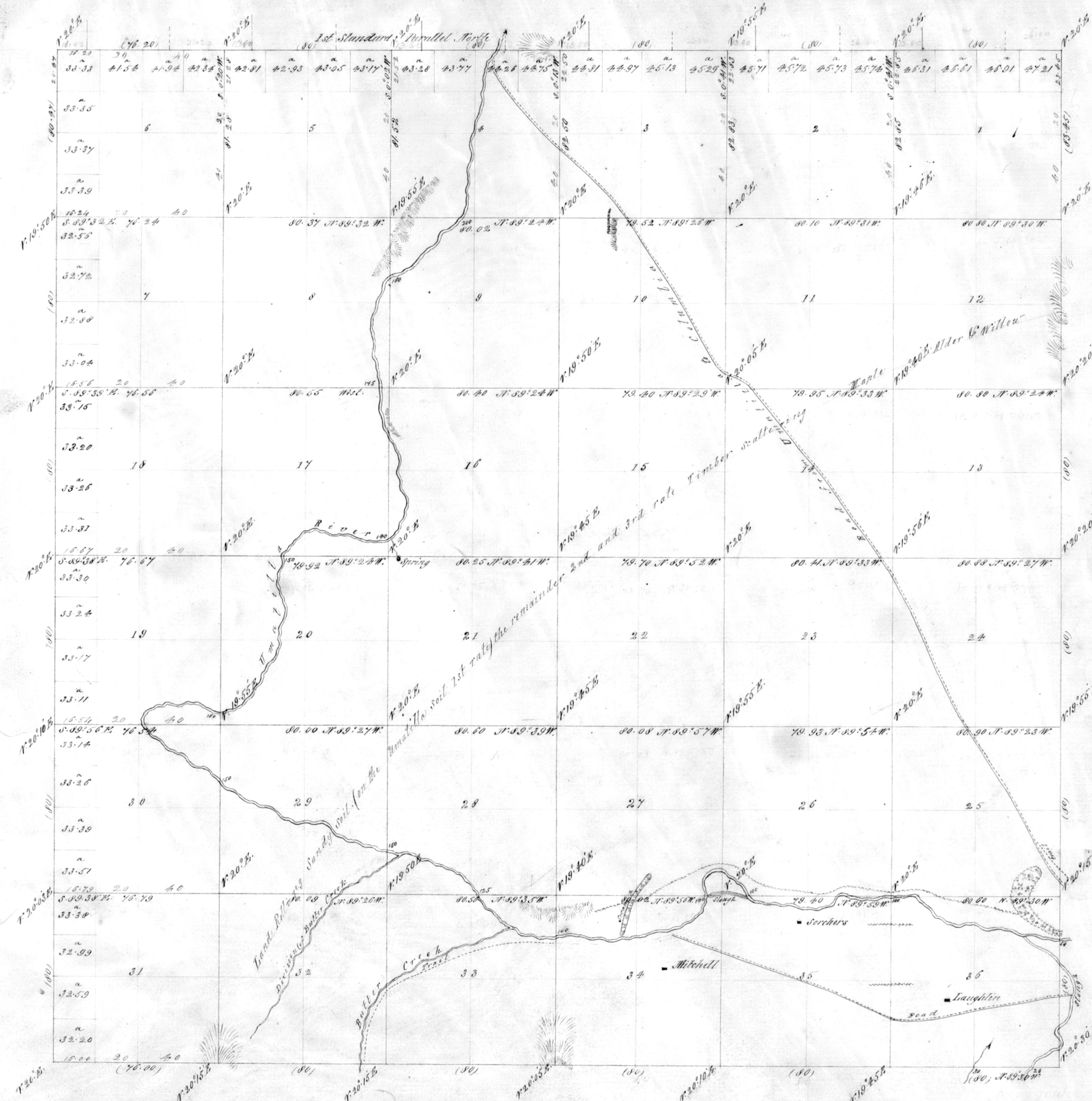


Township No 4 North Range No 28 East Willamette Meridian

3817



7 different plats 9/24/14

2 Supplemental plats of Rec. 2 accepted by G.S.O. Dec 1, 1913 and Sept 3, 1914

Scale 40 chains to an inch

Surveys designated	By whom Surveyed	Contract		Amt. of Surveys			When Commenced	When Completed
		No.	Date	Miles	Chains	Links		
Boundaries West	Eleazer E. Hoyt	93	September 11th 1860	66	00	47	September 23rd 1860	October 18th 1860
Subdivisions	Eleazer E. Hoyt	93	Do. Do.	59	79	03	October 18th 1860	October 26th 1860
Re-measurement of 1st 8th Ind. A.	Eleazer E. Hoyt	93	Do. Do.	05	76	20	October 18th 1860	October 26th 1860
Total number of Acres	22,978.82							

The above Map of Township No 4 North Range No 28 East of the Willamette Meridian Oregon is strictly conformable to the field notes of the survey. Same on file in this Office, which have been examined and approved.
 Surveyor General's Office
 Eugene City December 31st 1860.

W. H. Chapman

Surveyor Gen. of Oregon