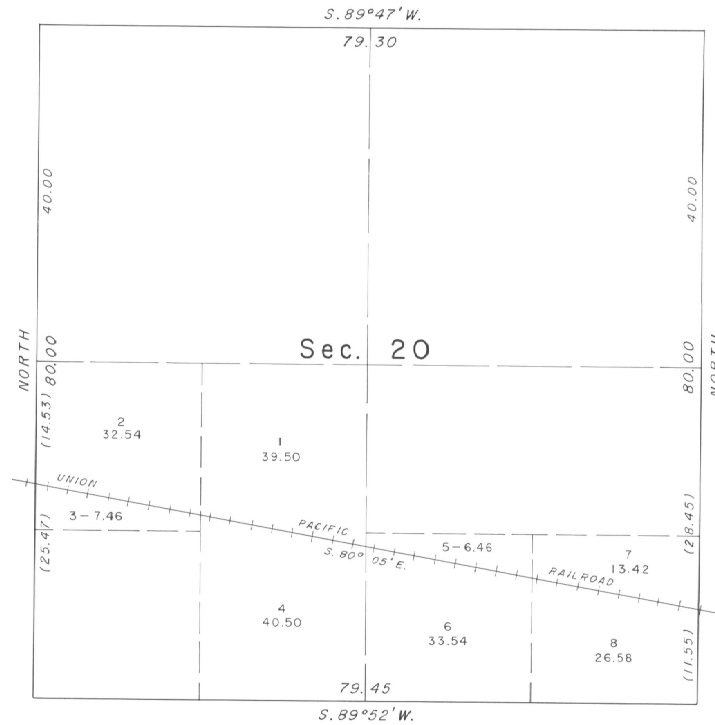


TOWNSHIP 4 NORTH, RANGE 27 EAST, OF THE WILLAMETTE MERIDIAN, OREGON.  
 SUPPLEMENTAL PLAT



This plat, showing amended lottings in section 20, T. 4 N., R. 27 E., Willamette Meridian, Oregon, is based upon the plat approved June 25, 1875, and railroad location data obtained from the Union Pacific Railroad.

UNITED STATES DEPARTMENT OF THE INTERIOR  
 BUREAU OF LAND MANAGEMENT  
 Washington, D. C.      October 30, 1967

This plat, showing amended lottings, is based upon the official records, and having been correctly prepared in accordance with the regulations, is hereby accepted.

For the Director

*R. L. Brown*

Acting Chief, Division of Engineering



Chains