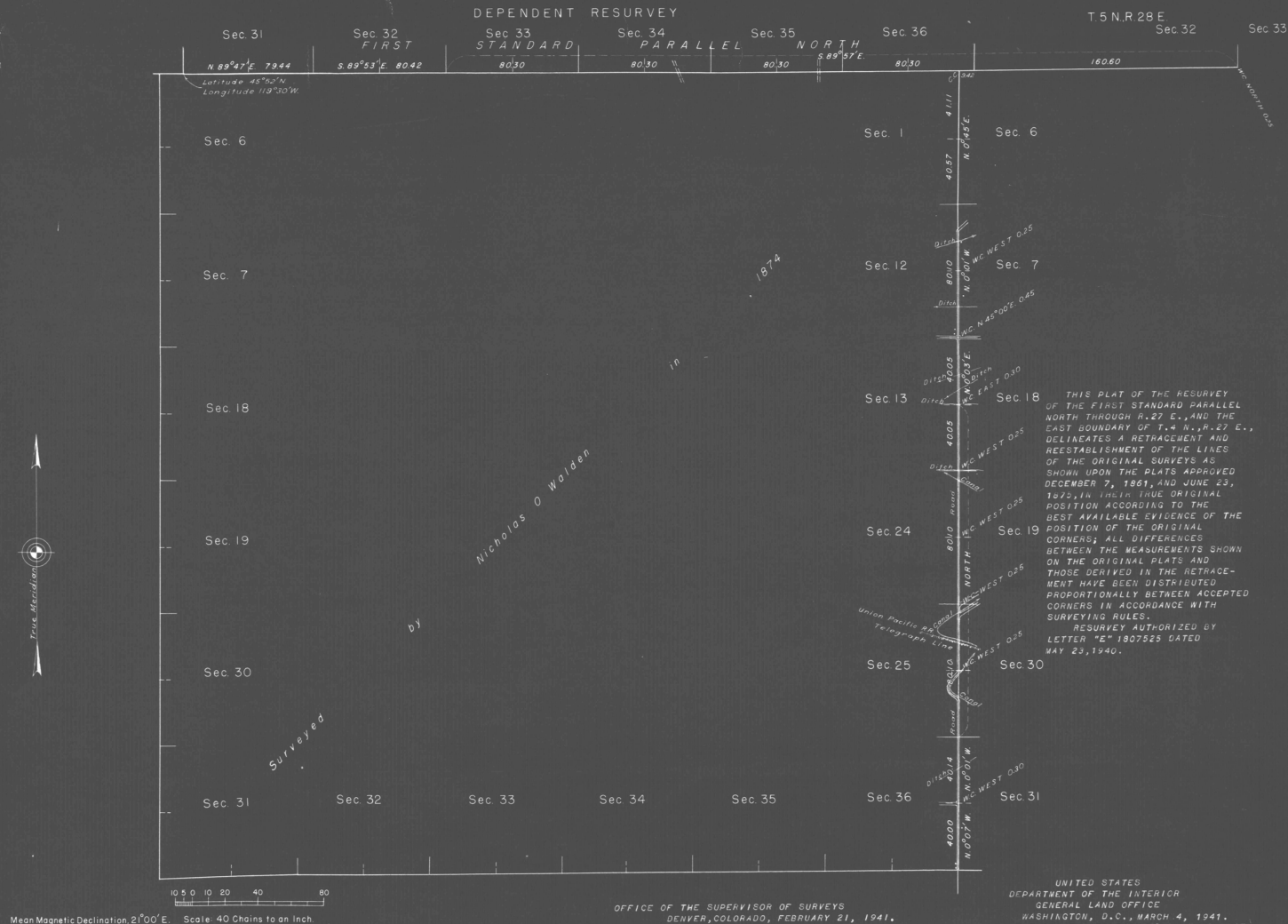


TOWNSHIP N^o 4 NORTH, RANGE N^o 27 EAST, OF THE WILLAMETTE MERIDIAN, OREGON.

LINES DESIGNATED BY WHOM SURVEYED	GROUP	DATE	MILEAGE		WHEN SURVEYED		
			MLS	CHS	BEGUN	COMPLETED	
Exteriors	Otis O. Gould	260	Sept. 9, 1940	12	3.28	Jan. 23, 1941	Jan. 25, 1941
Miscellaneous				2	3.15		

OFFICE OF THE SUPERVISOR OF SURVEYS
DENVER, COLORADO, FEBRUARY 21, 1941.

THE ABOVE PLAT OF TOWNSHIP N^o 4 NORTH, RANGE N^o 27 EAST, OF THE WILLAMETTE MERIDIAN, OREGON, IS STRICTLY CONFORMABLE TO THE FIELD NOTES OF THE SURVEY THEREOF WHICH HAVE BEEN EXAMINED AND APPROVED.

David J. Amson
SUPERVISOR OF SURVEYS.

UNITED STATES
DEPARTMENT OF THE INTERIOR
GENERAL LAND OFFICE
WASHINGTON, D. C., MARCH 4, 1941.

THE SURVEY REPRESENTED BY THIS PLAT HAVING BEEN CORRECTLY EXECUTED IN ACCORDANCE WITH THE REQUIREMENTS OF LAW AND THE REGULATIONS OF THIS OFFICE, IS HEREBY ACCEPTED.

Joel Ward Wolfson
ACTING ASSISTANT COMMISSIONER.