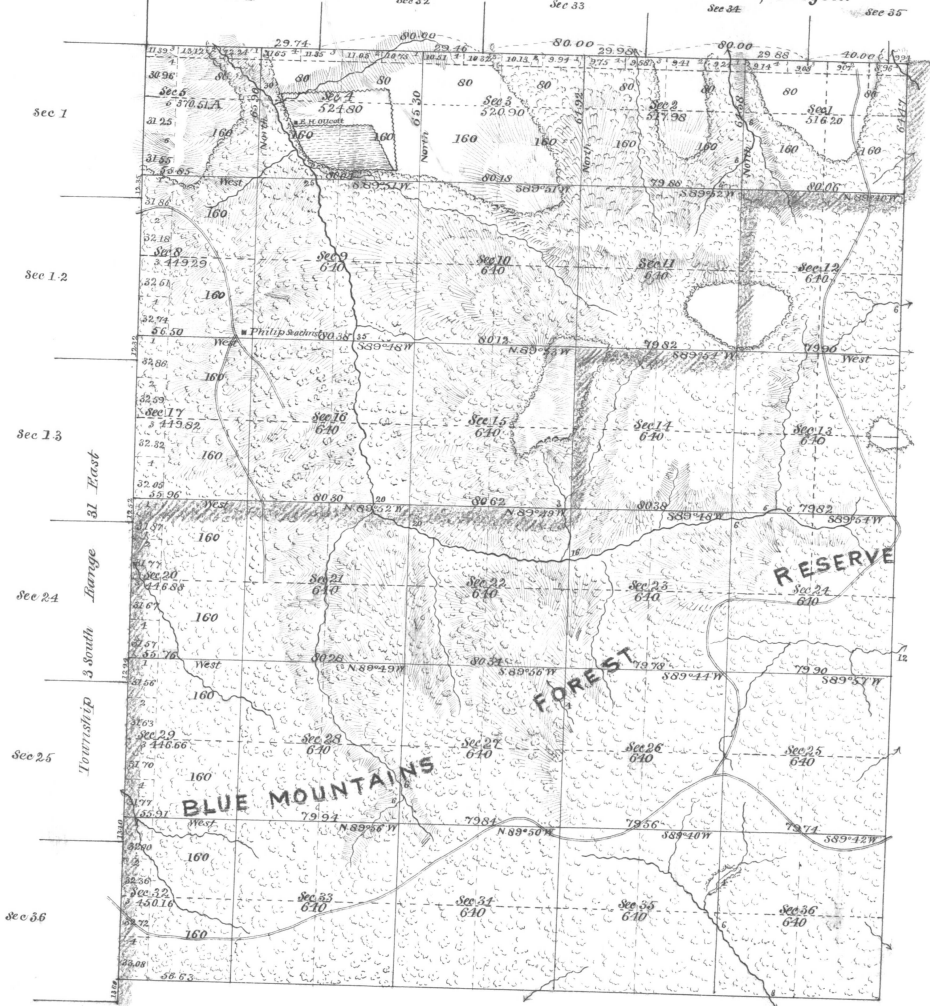


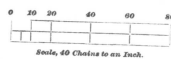
Township No. 3 South Range No. 32 East Willamette Meridian, Oregon.



ACCEPTED BY THE HON. COMMISSIONER G. L. O. August 23, 1882

Total number of Acres 17,493.20

SURVEYS DESIGNATED.	BY WHOM SURVEYED.	NO.	DATE OF CONTRACT.	AMOUNT OF SURVEYS.	WHEN SURVEYED.	MEAN DECLINATION.
Township Lines	George S. Pershore	130	March 23, 1882	Mis. Cont. 5 64	Line 14 77	
Subdivisions	do do do	do	do do do	16 61	56	May 16 to 27, 1882
Correctors	do do do	do	do do do	2 32	23	
Resurvey (Part N. E. 1/4)	do do do	do	do do do	3 40	00	



The above map of *Subdivisional Lines* of Township No. 3 South of Range No. 32 East of the Willamette Meridian, Oregon, is strictly conformable to the Field Notes of the survey thereof on file in this office, which have been examined and approved.
U. S. Surveyor-General's Office,
Portland, Oregon,
August 12, 1882. *J. A. ...*
Surveyor-General of Oregon.