

U. I. R.

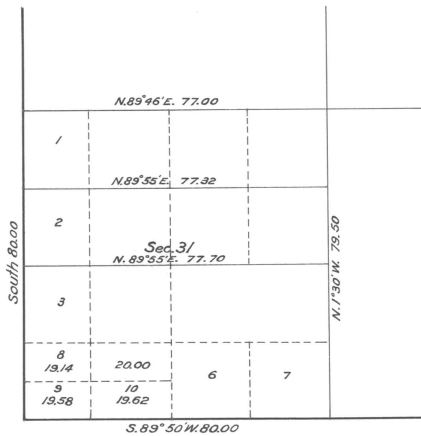
Supplemental Plat
of
Section 31 — T. 3 N.; R. 35 E., Willamette Meridian, Oregon.
Scale: 20 chains to an Inch

25
(T. 3 N., R. 34 E.)

30

29

36



32

1
(T. 2 N., R. 34 E.)

6
(T. 2 N., R. 35 E.)

5

This supplemental plat showing the subdivisions of lots 6 and 5, section 31, T. 3 N., R. 35 E., W. M. Oregon, shown on a plat approved June 14, 1890, is made for the purpose of obtaining the area and legal description of the subdivisions thereof to accommodate Indian allotments in the Umatilla Reservation, and is hereby approved.
U. S. Surveyor General's Office,
Portland, Oregon, April 22, 1915

Edmund deWorth
Surveyor General
for Oregon.