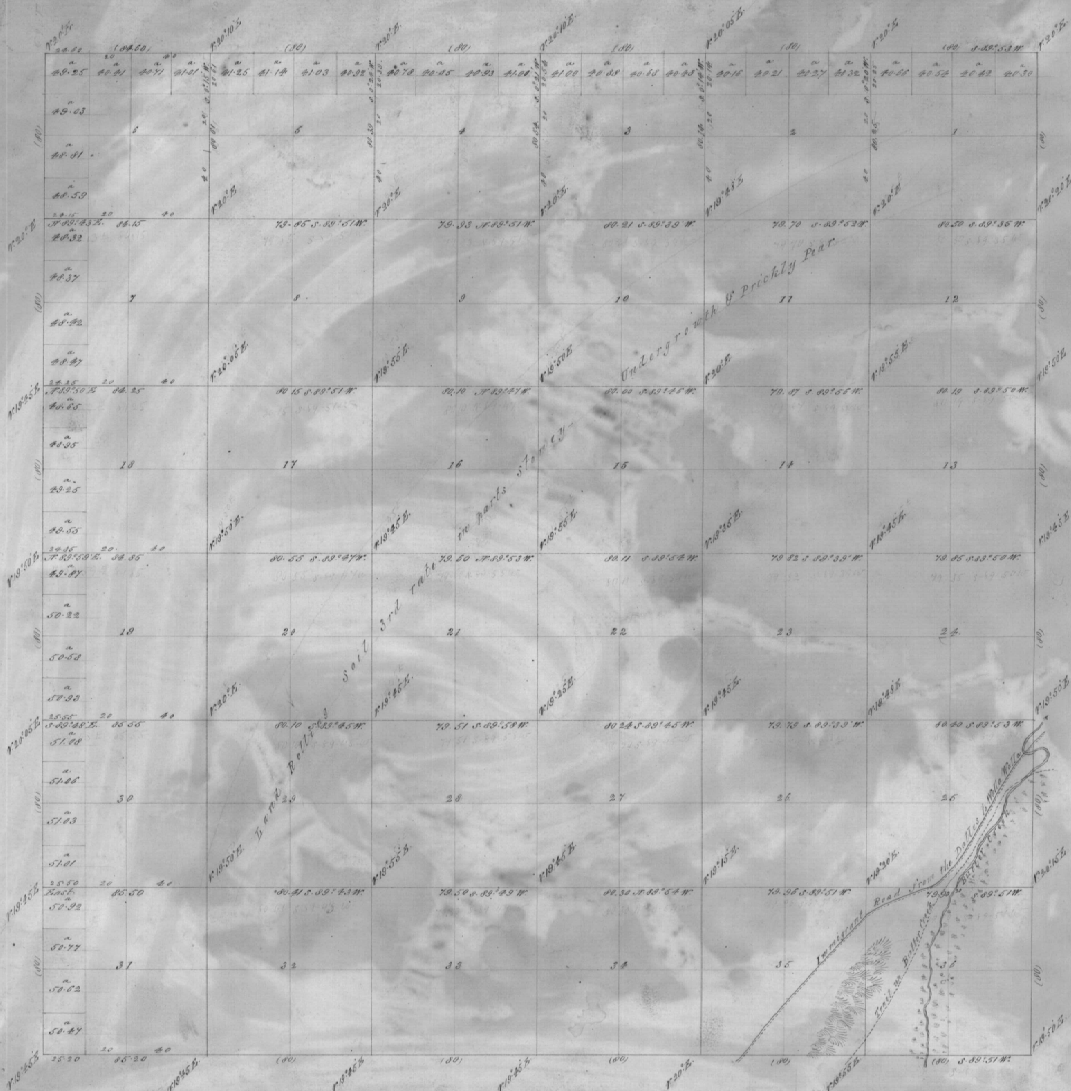


## Township No 3 North Range No 27 East Willamette Meridian

28  
1,25  
1,00

Survey designated	By whom surveyed	Cont. vol.		When commenced	When completed
		No.	P. C.		
Boundaries North W. Part	Ebenzer E. Hoff	53	28	September 22nd 1869	October 12th 1869
Subdivisions	Ebenzer E. Hoff	53	28	October 12th 1869	October 17th 1869
Total number of Acres	28290.77				

The above map of Township No 3 North Range No 27 East of the Willamette Meridian Oregon is strictly conformable to the field notes of the survey thereon on file in this Office, which have been examined and approved.

Surveyor General's Office  
 Eugene, City December 23rd 1869

W. H. Chapman

Surveyor Gen. of Oregon