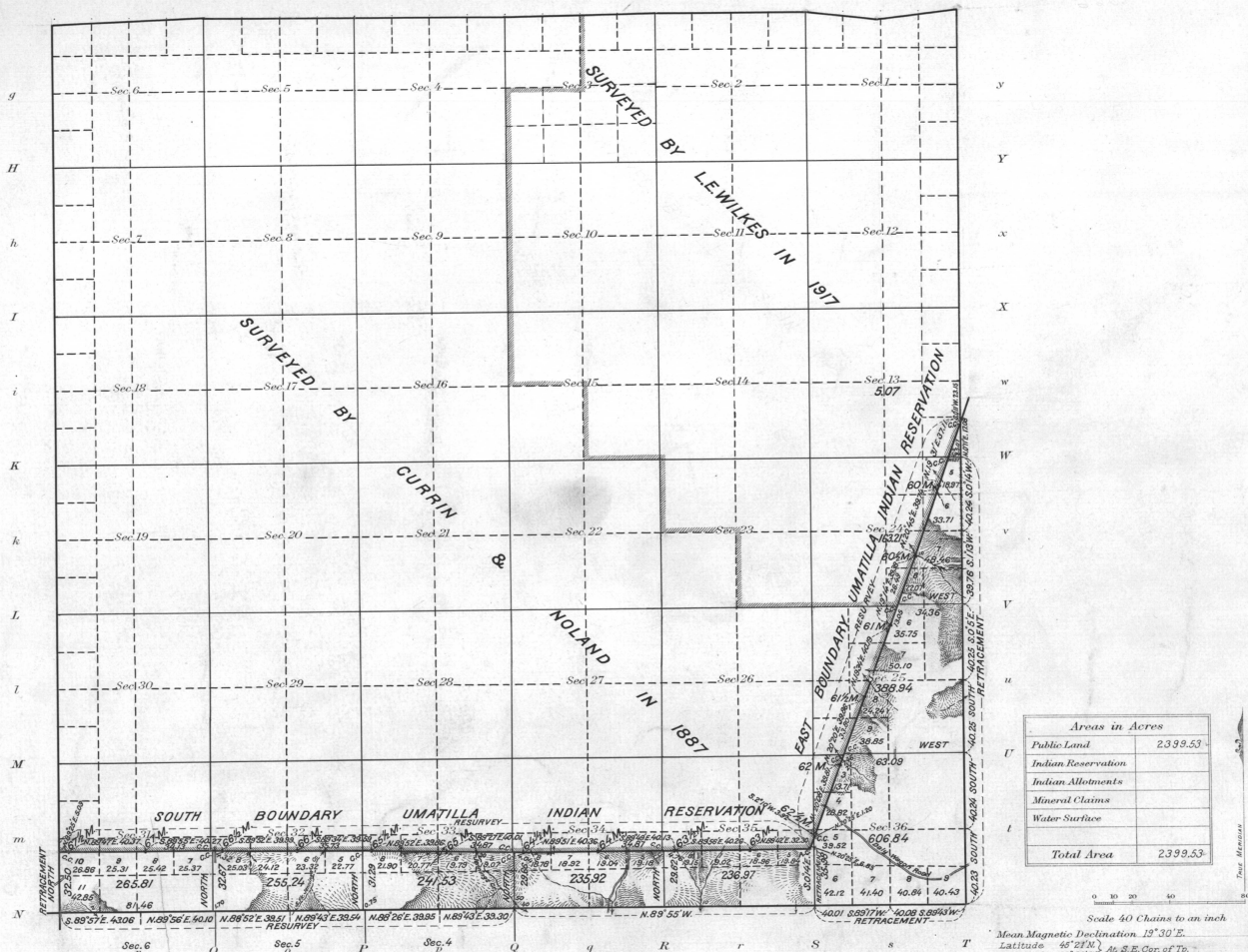


Township No. 2 South Range No. 34 East of the Willamette Meridian, Oregon.

G F E D C B A



Surveys Designated	By Whom Surveyed	Group	Date of Instructions	Amount of Surveys		When Surveyed	
				Mis.	chs.	Us.	Completed
Retract' Portion E. Bdy.	L. E. Wilkes	SB	April 19, 1917.	3	0	27	Oct. 10, 1917.
Retract' & Resur. Portion E. Bdy.	-	-	-	4	1	55	- 11 - 19 -
Retract' Portion W. Bdy.	-	-	-	-	32	50	- 16 -
Retract' & Sur. Portion Subdiv' Connections	-	-	-	3	26	53	- 10 - 18 -
-	-	-	-	0	33	63	- - -
N. E. & W. Bdr.	Currin & Noland						In 1892.
S. Bdy.	Rufus S. Moore	under	Contract	No.	451		In 1892.
E. Bdy.	" " "				397		1891.
Reservation Bdy.	Reestablished by Currin & Noland under Special						1887.

The above map of Township No. 2 South Range No. 34 East of the Willamette Meridian Oregon is strictly conformable to the field notes of the survey thereof on file in this office, which have been examined and approved

U. S. Surveyor General's Office.

Portland, Oregon, August 26, 1912.

E. W. Smith
Surveyor General of Oregon.