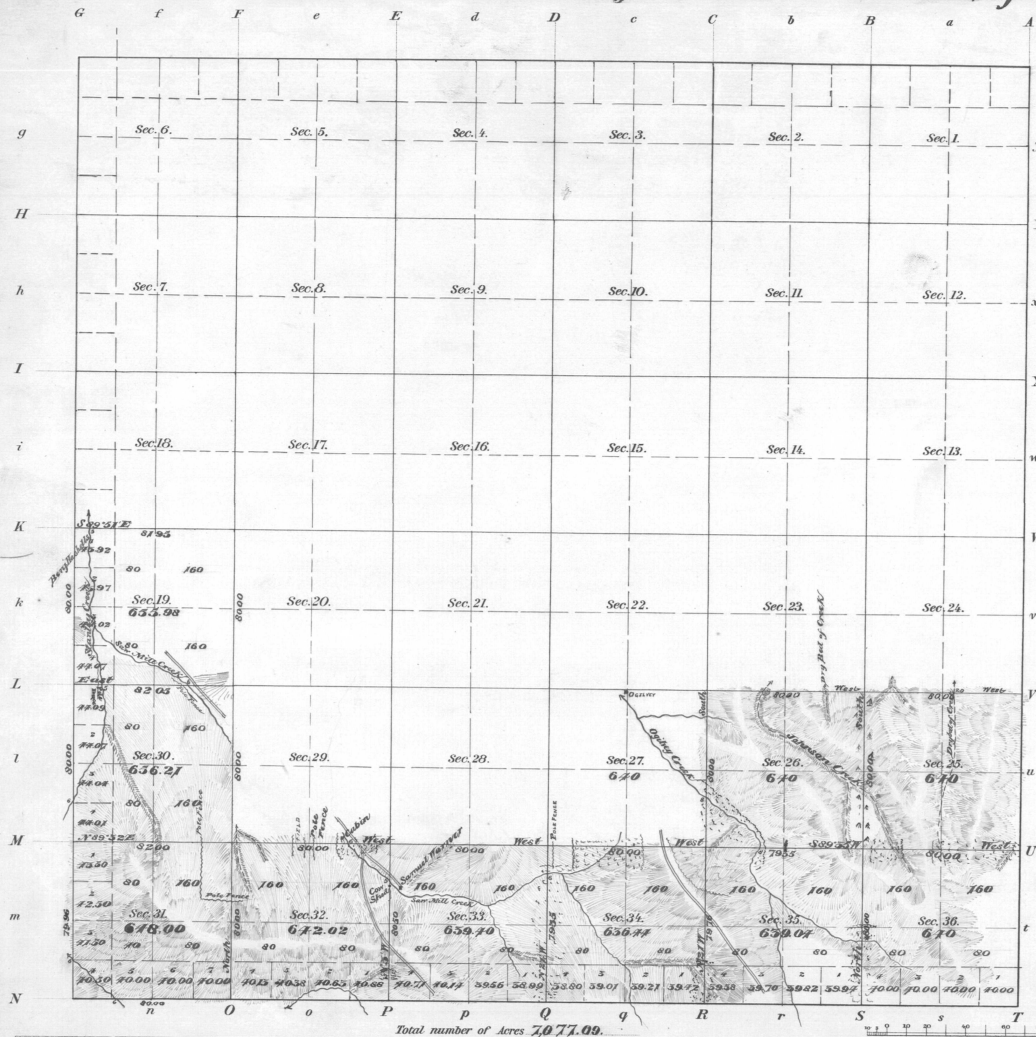


Township N<sup>o</sup> 2 South Range N<sup>o</sup> 32 East of the Willamette Meridian Oregon.



ACCEPTED BY THE HON. COMMISSIONER G. L. O. *January 26 1893*

Meanders of							
Point	Courses	CH&L#	Point	Courses	CH&L#	Point	Courses

Total number of Acres 7077.09

Surveyor Designated	By Whom Surveyed	Date of Contract	Amount of Survey M <sup>cs</sup>	When Surveyed	Bearing & Direction
Township lines	D. P. Thompson				
Subdivisions	John C. Arnold	March 18, 1890	11 05 07	Sept 28 to Oct 5, 1891	19° 50' E
Retrosive Subs.			8 07 93		
Top Line			2 79 96		

The above Map of Township N<sup>o</sup> 2 South of Range N<sup>o</sup> 32 East of the Willamette Meridian, State of Oregon, is strictly conformable to the field notes of the survey thereof on file in this Office, which have been examined and approved.

Surveyor General's Office, *W. Henry Boyce*  
 Portland, Oregon, *Sept 30, 1893* Sur. Gen. for Oregon