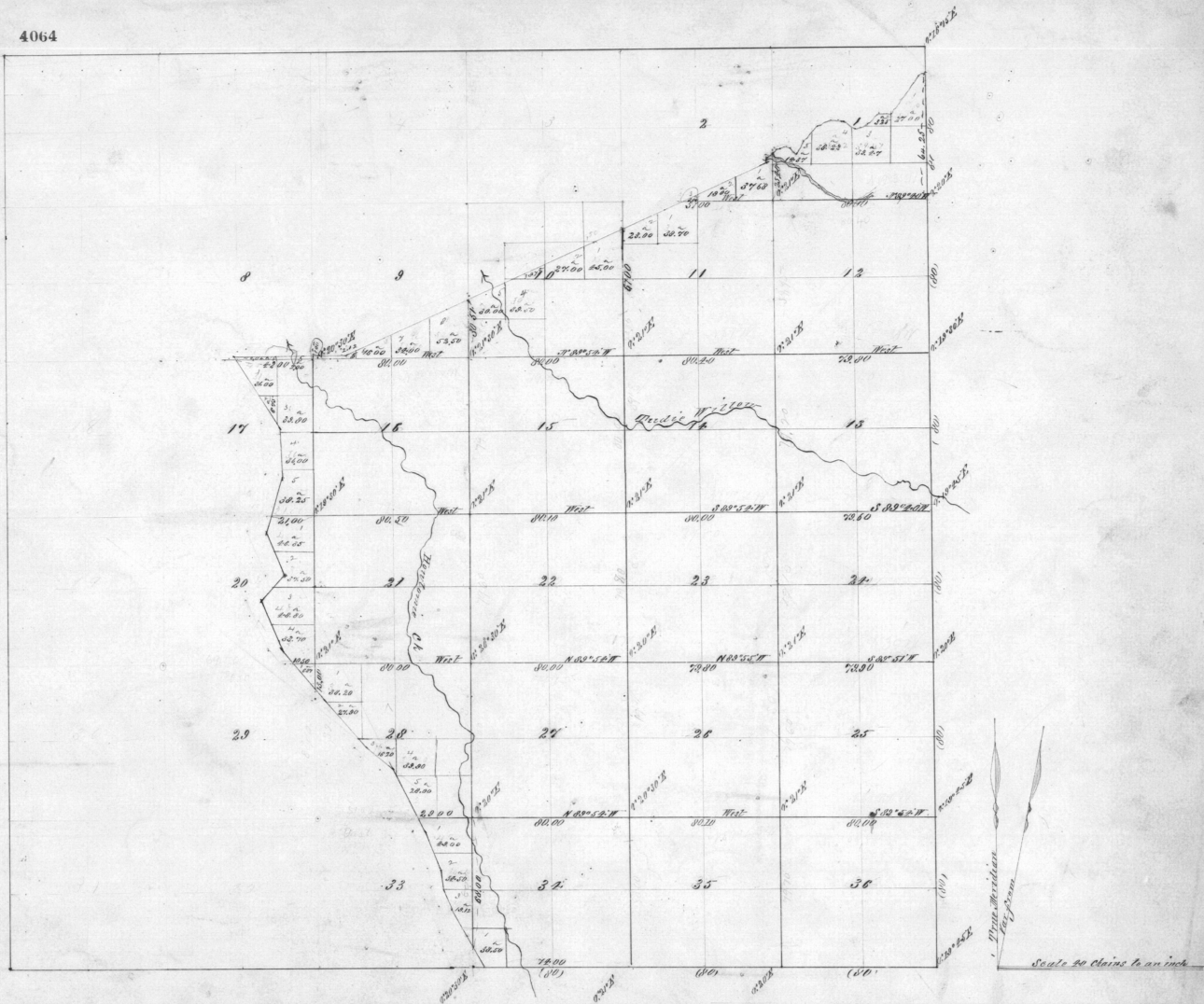


4064

Sections	Acres
1	322.70
2	52.48
3	5.06
4	108.82
10	326.37
11	52.70
12	520.00
13	640.00
14	640.00
15	640.00
16	640.00
17	640.00
20	116.25
21	620.00
22	620.00
23	620.00
24	620.00
25	620.00
26	620.00
27	620.00
28	641.50
29	6.28
33	102.42
34	630.00
35	620.00
36	620.00
Total	12030.00



Scale 20 Chains to an inch

Line Subdivisions	Contractor	Contract Date	Amount Surveyed	Per Chain	Links	Commenced	Completed
	Z. P. Moody	186 October 2, 1874	32	38	61	December 12, 1877	November 12, 1877

The above Map of T. 2 N. R. 33 E. Will. Mer. Oregon is strictly conformable to the original field notes of the survey thereof on file in this office and approved by the Surveyor General's Office, Eugene City, June 21, 1872.

W. H. Colwell
Surv. Gen.