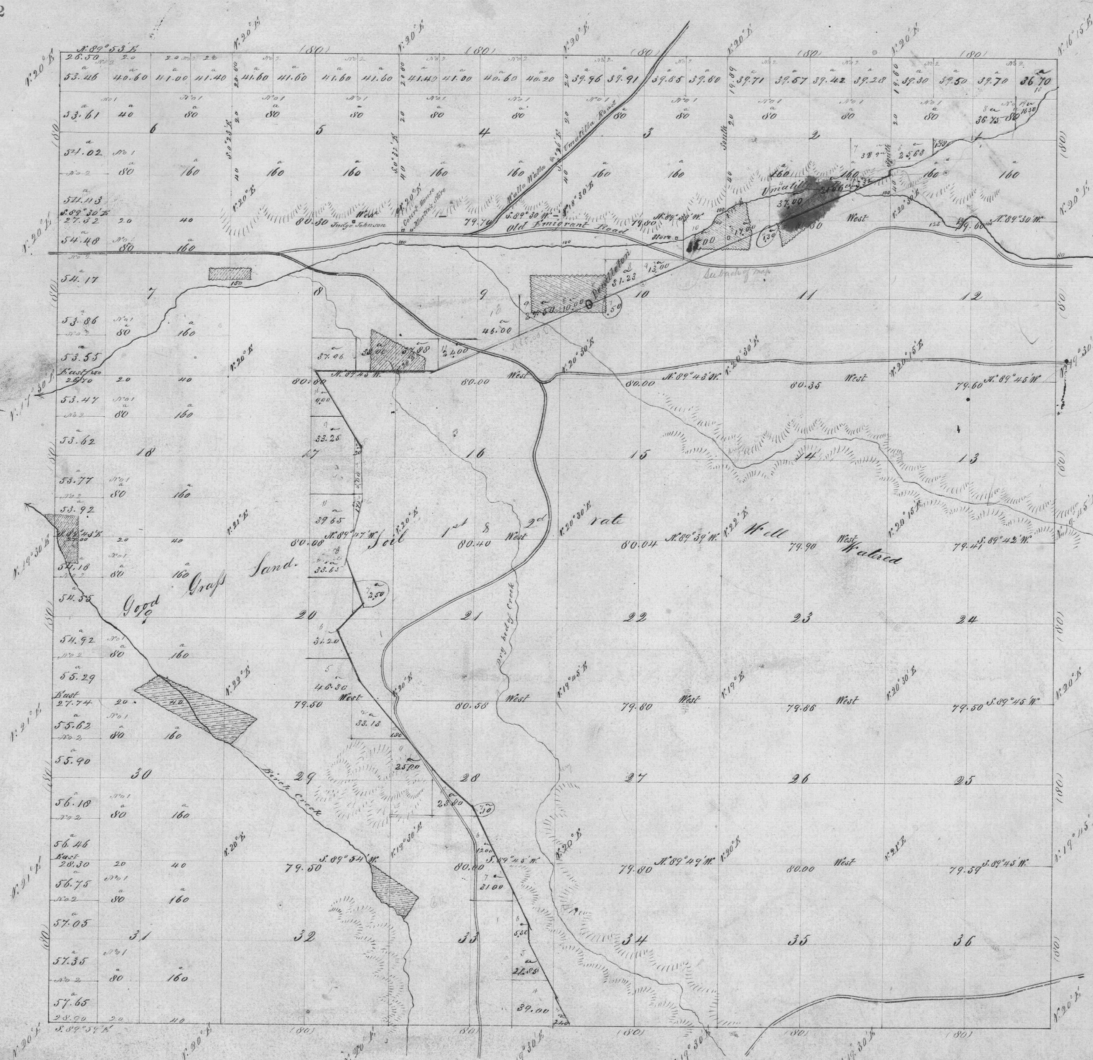


Township No. 2 North Range No. 32 East Willamette Meridian.

4062



Total Acres 21356.60

I certify that the setting and savings computed upon the survey of the northeastern corner of the Section 10, Township 2 N. R. 32 E. 32 W. has been as ordered on the field is correct.  
 Surveyor General's Office  
 Oregon City, 1865  
 W. H. Allen  
 Surveyor Gen.

Description of Lands	By whom Surveyed	Contract No.	Amount of Savings in Acres	When Surveyed
Subdivisions	Daniel Chapman	101 Sept. 21 1862	60 56 56	Nov. 4th, 1864
Total Acres	Thompson 166			
Total Acres 21356.77				

The above map of the survey of subdivision lands in T. 2 N. R. 32 E. 32 W. Willamette Meridian, Oregon, is hereby compared to the field notes of the Survey, which have been examined and approved.  
 Surveyor General's Office  
 Oregon City, Aug. 24th 1865

B. J. Rogers  
 Sur. Gen. of Oregon