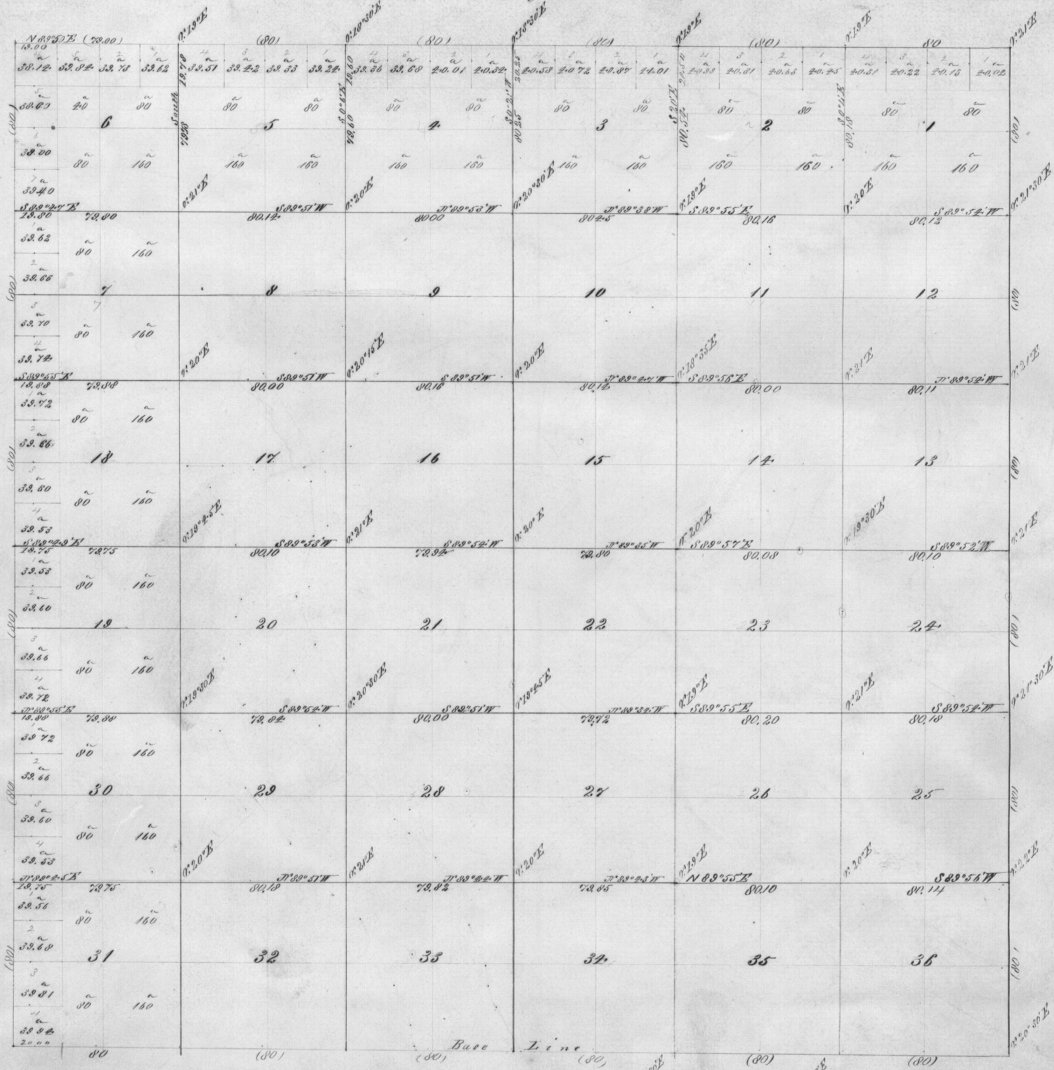


Area	
Sections	Acres
1	623.18
2	623.59
3	624.59
4	625.58
5	626.72
6	627.00
7	628.00
8	629.00
9	629.00
10	629.00
11	629.00
12	629.00
13	629.00
14	629.00
15	629.00
16	629.00
17	629.00
18	629.00
19	629.00
20	629.00
21	629.00
22	629.00
23	629.00
24	629.00
25	629.00
26	629.00
27	629.00
28	629.00
29	629.00
30	629.00
31	629.00
32	629.00
33	629.00
34	629.00
35	629.00
36	629.00
Total	15387.62
0.5 "	2642.58



General Description
The land in this Township is dry.
The soil good 3rd rate. Excellent
graze.



Lines	Contractor	Contract No.	Contract Date	First Survey	Blas Chain Lines	Commenced	Completed
Subdivisions	Z.P. Moody	188	October 2 nd 1871	54	70	88	November 2 1874 December 4 1871

The above Map of T. 1 N. R. 5 E. W. 1/4 Mer. Oregon is strictly conformable to the original field notes of the survey being on file in this Office which have been examined and approved,
Surveyor General, 1875,
Boggs City June 21 1877.

W. J. Colby
Surveyor General