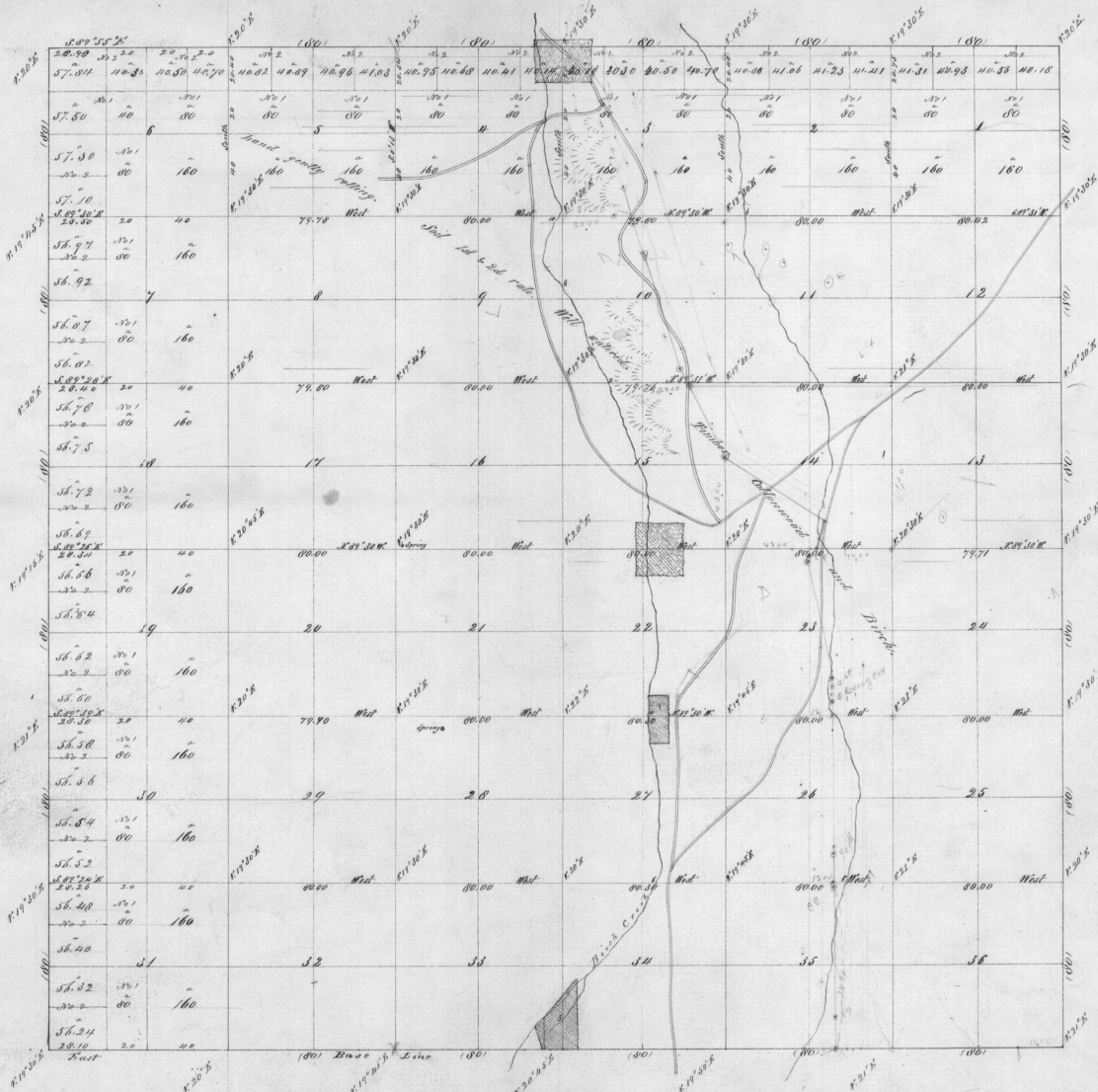


Township No. 1 North Range No. 32 East Willamette Meridian, Oregon.

4068



Scale, 10 chains to an inch

Description of Lines	By whom Surveyed	Contract		Amount of Survey		When Surveyed
		No.	Date	Miles	Chains Links	
Subdivisions	Daniel Chaplin	107	Sept. 21st 1864	60	45 68	October 26th 1864
Total Area	23338.00					

The above map of the Survey of Subdivisional land in T. 1 North, Range 32 East Willamette Meridian, Oregon, is strictly conformable to the field notes of the Surveyors thereof on file in this Office, which have been examined and approved.

Surveyors General's Office
 Oregon City, June 27th 1868

R. J. Penza
 Sur. Gen. of Oregon.