

USDA-FOREST SERVICE

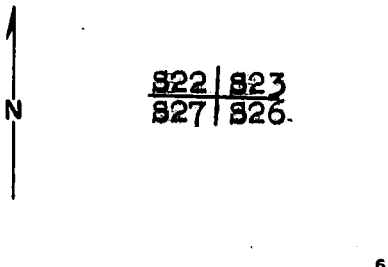
Index
 File No. R-17
 T 6S R. 32E
 Merid. W.M.

CORNER RECORD (SEARCH)

(Ref. FSM 7151.4)

Tract or Survey No. _____ Cor. No. _____
 R.D. N. Fk. J. Day County Umatilla
 N.F. Umatilla State OR.

CORNER DIAGRAM



DESCRIBE CORNER MONUMENT FOUND

2 1/2" iron pipe with brass cap mkd. in stone mound.

T6S R32E
 S22/S23
 S27/S26
 1967

DESCRIBE BEARING TREES OR OTHER OFFICIAL ACCESSORIES FOUND

Pine stump, approx. 14" dia., N19°E, 17.2' with scribing visible

Pine stump, approx. 20" dia., S31°W, 5.3'

Root hole, N51°W, 16.5', with down & scribed tree alongside

(Continued in "Remarks".)

DESCRIBE CORNER LOCATION-RELATIVE TO NEAR-BY FEATURES, ALSO HOW TO REACH CORNER

Corner falls on SW slope. From W1/16 S23 follow posted line 1/4 mi. west. S26

PHOTO IDENTIFICATION DATA

Photo No. _____
 Filed At. _____
 Object Ident. _____
 Ident. By _____
 Signature _____

PLANE COORDINATE POSITION DATA

State _____ Zone _____
 X _____
 Y _____
 Estab. By _____
 Agency _____

Signature *[Handwritten Signature]*

Title L.S.

Division _____

Headquarters _____

Date 11/19/86

FS-7100-52 (3/68)

CORNER RECORD (PERPETUATION)

MONUMENT: DESCRIBE NEW MONUMENT SET, OR WORK DONE TO PRESERVE EXISTING MONUMENT

None.

9

ACCESSORIES : DESCRIBE NEW BT'S WITNESS OBJECTS ETC. ESTABLISHED, OR WORK DONE TO PRESERVE EXISTING EVIDENCE

P. Pine, 13", N29 3/4°W, 37.1', mkl. T6S R32E S22 BT

BTs have blaze and 6" band painted red, BT tags and "Attention" signs. New BT has, additionally, an alum. "PLS 1832" washer nailed to the bottom of the blaze. 6' steel fence post with "Attention" sign within 5' of the corner.

10

Work Done By F.S. Mumro Title L.S. Date 11/1/86 State Registration No. 1832
or Agency

Certified Cor. Record Prepared ? Yes No Filed At: Umatilla Co. Surveyor Date

11

P. Pine root collar, N51 1/2°W, 31.7' REMARKS

with down, scribed tree Sly

P. Pine, 8", N35 1/2°E, 23.8', with healed blaze

P. Pine, 12", S75°E, 25.1', with healed blaze

P. Pine, 14", S37 1/2°W, 57.4', with healed blaze

12

Index File No. R-17 T. 6S R. 32E M. W.M. Tract or Surv. No. Cor. 13