

Index File No. C-13

CORNER RECORD (SEARCH)

Tract or Survey No. \_\_\_\_\_

Cor. No. 6-9

<sup>24</sup>  
C-13 05

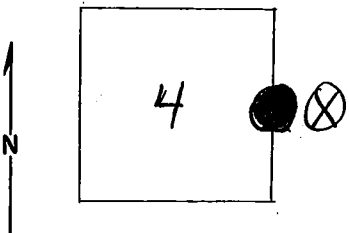
T 6S R. 32E

R.D. Ukiah County Umatilla

Merid. Willamette

N.F. Umatilla State Oregon

CORNER DIAGRAM



DESCRIBE CORNER MONUMENT FOUND

a stone in a pile of stones approx. 8"x12"

~~Brass Cap 300, Mon. F. 10.~~

Brass cap removed by BLM 1982

DESCRIBE BEARING TREES OR OTHER OFFICIAL ACCESSORIES FOUND

witness tree 28" DBH p. pine stump. Had been on snag which was felled to preserve the location. Bearing of N41E, dist. 31lks.  
 witness tree 32" DBH stump. Tree removed in Mt. Emily logging operation (Holady Bros. contractors) Cut high stump above scribing. New cruiser tag tacked on 26" DF facing corner at approx. 47 lks. S54E from corner. Old cruiser tag facing north on witness stump in section 5. "Attention" signs placed on witness trees.

DESCRIBE CORNER LOCATION RELATIVE TO NEAR-BY FEATURES, ALSO HOW TO REACH CORNER

PHOTO IDENTIFICATION DATA

Photo No. \_\_\_\_\_  
 Filed At. \_\_\_\_\_  
 Object Ident. \_\_\_\_\_  
 Ident. By \_\_\_\_\_  
 Signature \_\_\_\_\_

PLANE COORDINATE POSITION DATA

State \_\_\_\_\_ Zone \_\_\_\_\_  
 X \_\_\_\_\_  
 Y \_\_\_\_\_  
 Estab. By \_\_\_\_\_  
 Agency \_\_\_\_\_

Signature

*1st Lloyd A. Waid*

Title

*ADR*

Division

Headquarters

Date

*11/3/61*

7100-52

REV. 65 5

CORNER RECORD (PERPETUATION)

MONUMENT: DESCRIBE NEW MONUMENT SET, OR WORK DONE TO PRESERVE EXISTING MONUMENT

9

ACCESSORIES DESCRIBE NEW BT'S WITNESS OBJECTS ETC. ESTABLISHED, OR WORK DONE TO PRESERVE EXISTING EVIDENCE

10

Work Done By \_\_\_\_\_ Title \_\_\_\_\_ Date \_\_\_\_\_ State Registration No. or Agency \_\_\_\_\_

Certified Cor. Record Prepared? Yes No Filed At: \_\_\_\_\_ Date \_\_\_\_\_ 11

REMARKS

12

Index File No. C-13 T. R. M. Tract or Surv. No. Cor. 13