

CERTIFIED RECORD OF LAND CORNER MONUMENTATION

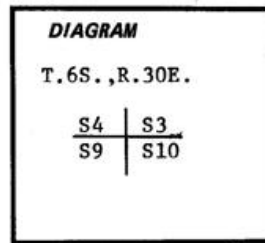
History of original corner establishment: Corner established in 1881

by Frank W. Campbell, under Contract No. 380.

Surveyor General Record States:

80.00 set a basalt stone 20x12x10 in a mound of stone for cor. to secs. 3, 4, 9 and 10 from which:

A pine 20 in. in diam. brs. N. 59° E. 77 lks. dist.
A pine 20 in. in diam. brs. S. 12° W. 39 lks. dist.



No record of subsequent remonumentation found in County Records.

Description of corner evidence found:

Found basalt stone 17"x12"x9" marked with 3 notches on west edge 5 grooves on South face. From which an OLD BT:

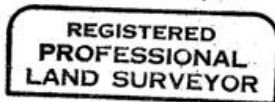
A dead and down 14" pine brs. N. 59° E. 50.8 ft. marked BT.
No evidence of the other BT was found.

Description of monument and accessories established to perpetuate the original location of this corner:

At the corner point: Set a 2½"x30" galvanized iron pipe 22" in the ground, from which I scribe NEW BEARING TREES:

An 8" fir bears N. 27° E. 22.0 ft. mkd. T6S R30E S3 BT.
A 27" pine bears S. 84° E. 40.3 ft. mkd T6S R30E S10 BT.
An 8" fir bears S. 9° W 25.0 ft. mkd T6S R30E S9 BT.
A 12" pine bears N. 67° W. 37.1 ft. mkd T6s R30E S4 BT.

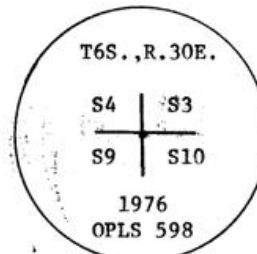
I nailed a brass washer mkd "OPLS 598" to the BT blaze of these trees. Set a steel fence post 5 ft. East of cor. Buried original corner stone East and alongside iron pipe. Surrounded pipe with a mound of stone. Corner is 12' East of N.S. fenceline. Used compass with 20° E. variation and steel tape, measuring to the center of all BTs.



Robert D. Bagett
OREGON
JULY 12, 1963
ROBERT D. BAGETT
598

Sept. 30, 1976

Office of..... County Surveyor..... County of..... Umatilla.....
State of..... Oregon....., I hereby certify that the within instrument was filed in this office
for record on the..... day of....., 19.....
..... by
(COUNTY OFFICIAL) (DEPUTY)



E-13