

OREGON CORNER RESTORATION FORM

COUNTY: Umatilla DATE: 04/16/08

CORNER DESIGNATION: N-25, The Southeast Corner of Section 13, Township 6 North, Range 36 East, W.M..

PREVIOUS RENEWALS/SURVEYS ETC.: Corner was originally established by Odell & Lewis under Contract No. 110, dated February 7, 1865. Notes state: Set post Cor. For Secs. 13, 24, 18 & 19. Drove charred stake; dug pits & raised mound, as per instructions. George Williams, in his subdivision survey of T6N., R37E., W.M., tied into this corner and called for a fence 5.25 chains East of the corner.

Dwight Bartleson established a monument for this corner under Survey No. 99-282-B.

MONUMENT AND ACCESSORIES FOUND: Found 2 3/8" brass cap on galvanized iron pipe monument established under Survey No. 99-282-B. This monument was not held.

MONUMENT MARKING DETAIL:

T6N
R36E R37E
S13 | S18
S24 | S19
2008
PLS 1106

MONUMENT SET: I reestablished this corner holding the Southerly projection of an old fence line, (posts but no wire), found North of the corner point. For latitude, I held the record proportioned latitude between the Southeast Corner of Section 24 and the reestablished Northeast Corner of Section 13. At the reestablished corner point, set 2 3/8" brass cap on a 1 1/4" x 20" galvanized iron pipe, with cap buried 28" below ground level, marked as shown in "Monument Marking Detail".

New accessories:

A silver deep-1 magnet bears North 29° East, 33.5 feet.

A purple deep-1 magnet bears South 61° East, 28.1 feet.

A blue deep-1 magnet bears South 40° West, 33.5 feet.

The brass cap monument from Survey No. 99-282-B, buried 12" below ground line, bears North 87°13'56" West, 79.57 feet.

Deep-1 magnets are buried 20" below ground level and a bearing object sign is buried with them.

LOCATION AND COMMENTS:

Falls in a wheat field with no features. There is a fence on the edge of the wheat field about 322 feet East.

OREGON STATE PLANE COORDINATE, North Zone, NAD 83(91), International Feet:

N = 855504.90

E = 8774945.58

FIRM: Wells Surveying

P.O. Box 1696

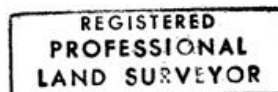
Pendleton, OR 97801

COMPASS DECLINATION: 18° East

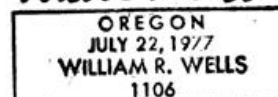
Surveyor's Seal

Witnesses: Jason Wells, LSIT

\6N36N25



William R. Wells



Expires 6-30-10

09-10-c