

# OREGON CORNER RESTORATION FORM

COUNTY: Umatilla. DATE: 2/20/08.

CORNER DESIGNATION: P-1, the West One-Quarter Corner of Section 19, Township 6 North, Range 36 East, W.M..

PREVIOUS RENEWALS/SURVEYS ETC.: Corner was originally established by Odell & Lewis, under GLO Contract No. 110, dated February 7, 1865. Notes state: "Set 1/4 Sec post, on level. Drove charred stake; dug pits and raised mound, as per instructions".

John Kimbrell, in survey diagram at Record of Private Surveys, Book 1, Page 315, shows the West line of Section 19 was measured at 80.58 chains. Distances on this diagram indicate the corner position was calculated, but there is no information on what was set for the corner. The estimated date for this survey is 1892.

J.C. Arnold, in survey recorded at Record of Private Surveys, Book 1, Page 273, dated September 11, 1893, measured through the corner but does not report recovering or reestablishing it.

MONUMENT AND ACCESSORIES FOUND: None. The corner area has been farmed over for at least 50 years, evidenced by reference to 1956 ASCS photos. There are no possessory lines in the corner area.

## MONUMENT MARKING DETAIL:

T6N  
R35E 1/4 R36E  
S24|S19  
2008  
PLS 1106

## MONUMENT SET:

Corner point was reestablished by single proportionate measure between the accepted West one-quarter corner of Section 30 and accepted Northwest Corner of Section 19. At reestablished corner point, set a 2 3/8" brass cap on a 1 1/4" x 30" iron rebar, 30" below ground level, marked as shown in "Monument Marking Detail".

### New accessories:

PP&L pole #190500 bears North 18° East, 89.4 feet to nail with brass washer stamped "PLS1106", 1.0 feet above ground level on South side.

A guy wire for same pole bears North 02° East, 72.5 feet (measured where guy enters ground).

A blue "Deep-1" magnet bears South 46° East, 30.1 feet, buried 22 inches below ground level.

A pink "Deep-1" magnet bears South 52° West, 30.9 feet, buried 22 inches below ground level.

Attached bearing object and witness signs to power pole and buried bearing object signs with "Deep-1" magnets. Set steel fence post 1 foot East of new corner monument.

LOCATION AND COMMENTS: Corner is located in farmed field with no features. Property owner to Southeast will be building a fence to the corner point, so the monument was set at ground level.

OREGON STATE PLANE COORDINATE, North Zone, NAD 83(91), International Feet:

N = 851988.34

E = 8743092.86

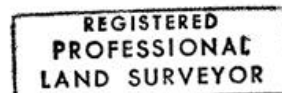
FIRM: Wells Surveying  
P.O. Box 1696  
Pendleton, OR 97801

COMPASS DECLINATION: 18° East

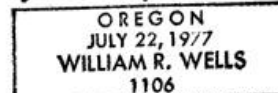
Surveyor's Seal

Witnesses: Jason Wells, LSIT

\6N36P-1



*William R. Wells*



*renews 6-30-08*

*08-49-B*