

GOVERNMENT CORNER RECORD

Township 6N Range 35E Section 35 County UMATILLA

State OREGON Date 10/1/96 Number Z-19

Corner Designation : SOUTH 1/4 CORNER SECTIONS $\frac{35}{2}$
 T6N, R35E & T5N, R35E

Previous Renewals _____

Monument (s) Found: (Condition and Source)

FOUND 2 1/2" BRASS MONUMENT IN MONUMENT WELL
.40' DEEP IN GOOD CONDITION.
(SEE MONUMENT DETAIL)

Accessories Found:

FOUND NAIL AND WASHER IN POWER POLE 39.85' EAST
(SEE MONUMENT DETAIL)

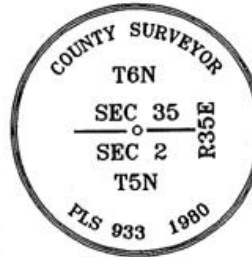
Monument & Accessories Set (Procedure and Description)

TIED TO BOTTOM CORNERS OF CONCRET BARRICADE OF BRIDGE WALL AND TO EXISTING NAIL & WASHER
IN POWER POLE.
(SEE SKETCH DETAIL BELOW)

- _____ Condition Report Only
- _____ Not Found
- _____ Renewed
- _____ Surveyed In
- X Referenced

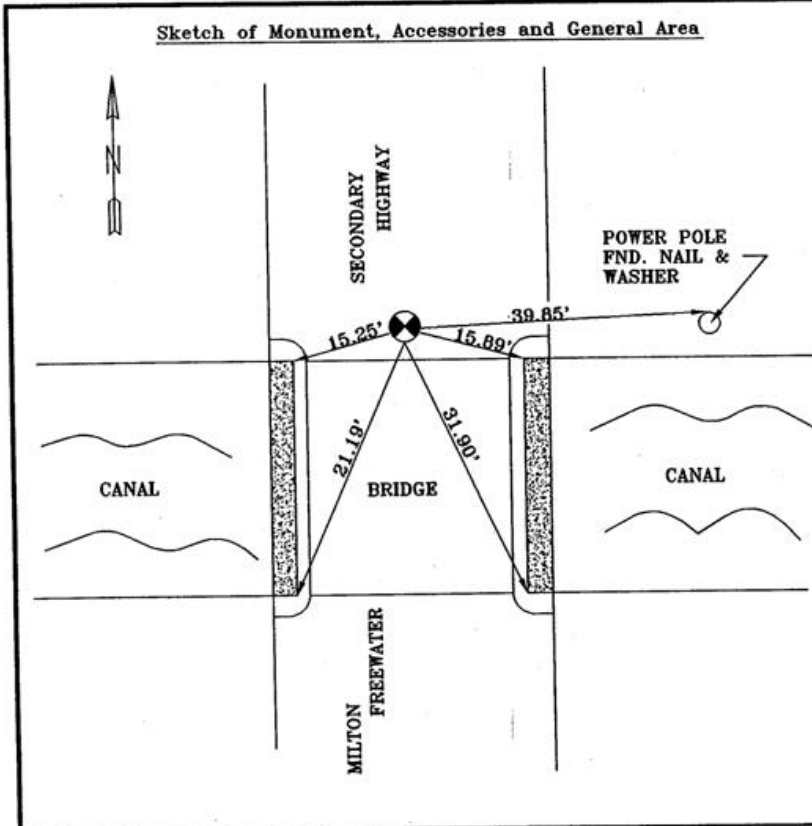
MONUMENT DETAIL

X Found _____ Set



WASHER DETAIL

Sketch of Monument, Accessories and General Area



Surveyor's Seal REGISTERED PROFESSIONAL LAND SURVEYOR OREGON JAN. 21, 1988 DANNY K. CUMMINGS 2316
RENEWAL DATE : 12-31-97
Agency <u>GASCHLER & CUMMINGS</u> Party Chief <u>D. CUMMINGS</u> Notekeeper <u>L. KING</u> Witness(s) _____ Field Book #0-135 pg12-13
COUNTY SURVEYOR RECORDING INFO
Received _____
Filed _____
Survey No. <u>76-164-B</u>
Drawing No. _____
Index No. _____