

OREGON CORNER RESTORATION FORM

Section: 26,27,34,35
Township: 6 North
Range: 35 East of the Willamette Meridian
County: Umatilla
Date: June 29, 2002

Corner Indexing Information: Township 6N Range 35E Corner Code V 17 (Willamette Meridian)

Additional Identifier: (e.g. BLM designation for the corner, street intersection, plat name, block, lot, etc.)

This corner is common to sections: 26,27,34,35.

Oregon Plane Coordinates: N: 843694.393 E: 8732808.488

Zone: North **Order:** second **Datum:** NAD83-91 **Convergence:** 1°28'48.4" **Scale Factor:** .99994462

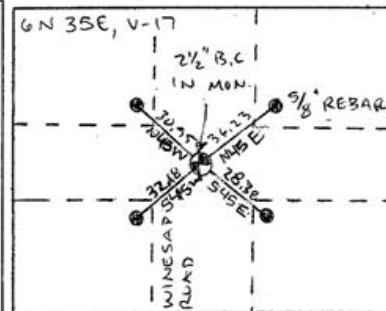
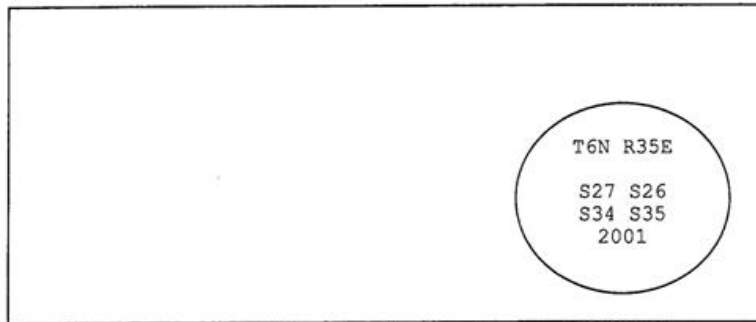
Previous Renewals/Surveys, etc.: Originally surveyed by U.S. Deputy Surveyor William Odell under his contract No. 110, dated 8-23-1875. The Surveyor General's notes state, "set post corner for sections 26,17,34, and 35, drove a charred stake, dug pits and raised mounds as per instructions." Survey No. 427, Book 2, Page 303, dated 1919, Perry found a broken rock and set a 6"x6"x12" rock marked with a "+" on the top. Survey No. 02-18-B, dated February 19, 2002, Haddock found a 6"x6"x12" rock marked with a "+" on top and set a 2 1/2" brass cap.

Monument(s) & Accessories Found (Condition & Source):

At the southwest corner of section 26, T6N R35E, we found a 2 1/2" brass cap at the pavement surface.

Monument Set (Procedures & Description):

Monument Detail:



New Accessories: WE SET:

A 5/8 rebar with yellow plastic cap stamped 'Tomkins Surveying' which bears N 45°E ~ 36.23 from the corner. Attached a Umatilla County Bearing object to t-post. A 5/8 rebar with yellow plastic cap stamped 'Tomkins Surveying' which bears S 45°E ~ 28.38 feet from the corner. No Umatilla County Bearing object or t-post set. A 5/8 rebar with yellow plastic cap stamped 'Tomkins Surveying' which bears S 45°W ~ 32.18 feet from the corner. No Umatilla County Bearing object or t-post set. A 5/8 rebar with yellow plastic cap stamped 'Tomkins Surveying' which bears N 45°W ~ 30.95 feet from the corner. Attached a Umatilla County Bearing object to the southeast face of a power pole.

Location & Comments:

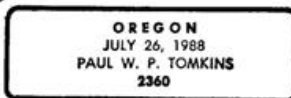
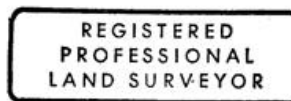
Compass Declination:

19° East

Firm/Agency: Tomkins Land Surveying, Inc.
 20 E. Poplar, Suite 204
 Walla Walla, WA 99362

Party Chief: Bryan Martin
Notes: Bryan Martin
Witness: Eric Flowers

Surveyor's Seal



*renews 6/30/04
6/30/02*