

OREGON CORNER RESTORATION FORM

Section: 22 & 27
Township: 6 North
Range: 35 East of the Willamette Meridian
County: Umatilla
Date: June 1, 2002

Corner Indexing Information: Township 6N Range 35E Corner Code R 15 (Willamette Meridian)

Additional Identifier: (e.g. BLM designation for the corner, street intersection, plat name, block, lot, etc.)

This quarter corner is common to sections 22 & 27.

Oregon Plane Coordinates: N: 848953.746 E: 8729949.149

Zone: North **Order:** second **Datum:** NAD83-91 **Convergence:** 1°28'21.0" **Scale Factor:** .99995235

Previous Renewals/Surveys, etc.: Originally surveyed by U.S. Deputy Surveyor William Odell under his contract No. 110, dated 8-23-1865. The Surveyor General's notes state, "set ¼ section corner post, dug pits, and raised mounds as per instructions." Survey No. 210, Book 1, Page 572, dated Dec 13, 1904, Kimbrell set a stone 15"x9"x7" by survey. Survey N-21-C, dated July 1977, Swan set an iron pipe by survey.

Monument(s) & Accessories Found (Condition & Source):

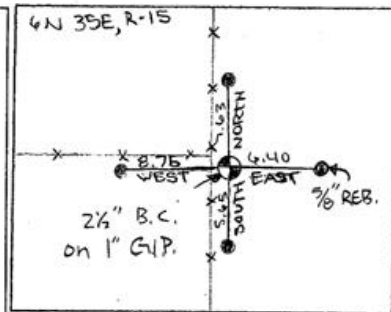
At the south quarter corner of section 22, T6N R35E, we found 1 ½"x 21" iron pipe at the southeast corner of railroad tie fence corner post.

Monument Set (Procedures & Description):

Set 1" x 30" flared end galvanized pipe with 2 ½" brass cap at the surface stamped (see example below)

T6N R35E
LS 2360
S22
S27
2001

Monument Detail:



New Accessories: WE SET:

A 5/8 rebar with yellow plastic cap stamped 'Tomkins Surveying' which bears East 6.40 feet from the corner. No Umatilla County Bearing object sign or t-post set. A 5/8 rebar with yellow plastic cap stamped 'Tomkins Surveying' which bears South ~ 5.65 feet from the corner. Attached a Umatilla County Bearing object to the north face of a railroad tie fence post. A 5/8 rebar with yellow plastic cap stamped 'Tomkins Surveying' which bears West ~ 8.75 feet from the corner. Attached a Umatilla County Bearing object to the south face of a railroad tie fence post. A 5/8 rebar with yellow plastic cap stamped 'Tomkins Surveying' which bears North ~ 7.63 feet from the corner. Attached a Umatilla County Bearing object to the east face of a railroad tie fence post.

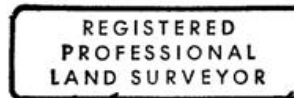
Location & Comments:

Compass Declination:

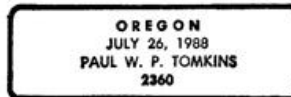
19° East

Surveyor's Seal

Firm/Agency: Tomkins Land Surveying, Inc.
 20 E. Poplar, Suite 204
 Walla Walla, WA 99362



Paul W. P. Tomkins



*renews 6/30/04
6/30/02*

Party Chief: Bryan Martin
Notes: Bryan Martin
Witness: Eric Flowers