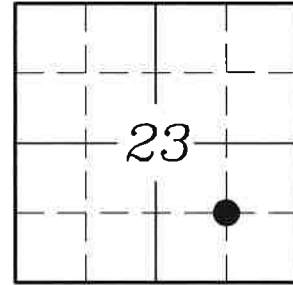


CORNER REMONUMENTATION FORM

Q - 20

HISTORY OF ORIGINAL CORNER ESTABLISHMENT

A RAILROAD SPIKE WAS FOUND AT THE CENTER OF RAILROAD TRACKS AND FERNDALE ROAD, DURING CS 85-041-B.



DESCRIPTION OF CORNER EVIDENCE FOUND

NONE. THE RAIL ROAD TRACKS HAVE BEEN REMOVED SINCE CS 85-041-B. THE SIXTEENTH CORNER / RAILROAD SPIKE WAS APPARENTLY DESTROYED AT THAT TIME.

T. 6 N., R. 35 E.

DESCRIPTION OF MONUMENTS FOUND

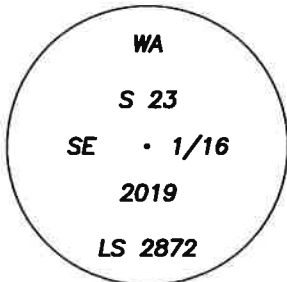
SEE COUNTY SURVEYS 19-050-B & 19-054-B

THIS SIXTEENTH CORNER WAS REESTABLISHED ON THE NORTH LINE OF THE SOUTH HALF OF THE SOUTHEAST QUARTER.

- A 5/8 INCH IRON ROD WITH 1 1/2 ALUM CAP (CS 85-041-B), BRS. N89°43'39"W, 315.00 FT.
- A RAIL ROAD SPIKE, BEING THE S 1/16 23/24 (REPORTED PER CS 1-14-B) BRS. S89°43'39"E, 1320.44 FT.

DESCRIPTION OF MONUMENT AND ACCESSORIES I ESTABLISHED TO PERPETUATE THE LOCATION OF THIS CORNER :

A 2 1/2 INCH MAG NAIL WITH 1 1/2 INCH STEEL WASHER MKD: "WA, S23 SE1/16, 2019, LS2872"



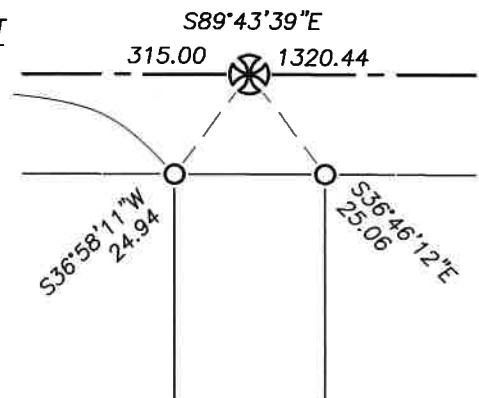
FROM WHICH :

A 5/8 X 30 INCH IRON REBAR WITH LIGHT BLUE PLASTIC CAP MKD: "WALLOWA ASSOCIATES," BRS. S36°58'11"W, 24.94 FT.

A 5/8 X 30 INCH IRON REBAR WITH LIGHT BLUE PLASTIC CAP MKD: "WALLOWA ASSOCIATES," BRS. S36°46'12"E, 25.06 FT.

FERNDALE ROAD

RM LIES AT S. SIDE OF 2' X 2' CONCRETE RR SIGNAL BASE



MONUMENT LIES AT SURFACE OF ASPHALT, IN CENTER OF FERNDALE ROAD.

OFFICE OF _____ COUNTY OF _____
 STATE OF _____, I HEREBY CERTIFY THAT THE
 WITHIN INSTRUMENT WAS FILED IN THIS OFFICE FOR RECORDING ON
 _____ DAY OF _____, 2019

BY _____ BY _____
 (COUNTY OFFICIAL) (DEPUTY)

REGISTERED
 PROFESSIONAL
 LAND SURVEYOR

Rodney J. Lewis
 OREGON
 JULY 14, 1998
RODNEY J. LEWIS
 2872

EXPIRES 12-31-20

19-054-B