

OREGON CORNER RESTORATION FORM

Section: 13,14,23,24
Township: 6 North
Range: 35 East of the Willamette Meridian
County: Umatilla
Date: June 1, 2002

Corner Indexing Information: Township 6N Range 35E Corner Code N 21 (Willamette Meridian)
Additional Identifier: (e.g. BLM designation for the corner, street intersection, plat name, block, lot, etc.)
This corner is common to sections 13,14,23, and 24.

Oregon Plane Coordinates: N: 854479.345 E: 8737709.314
Zone: North Order: second Datum: NAD83-91 Convergence: 1°29'40.4" Scale Factor: .99995678

Previous Renewals/Surveys, etc.: Originally surveyed by U.S. Deputy Surveyor William Odell under his contract No. 110, dated 8-23-1865. The Surveyor Generals notes state, "set post corner for sections 13, 14, 23, and 24, drove charred stake, dug pits, and raised mounds as per instructions." Survey No. 41, Book 1, Page 215, dated March 11, 1889, Arnold found a stone under a North-South fence accepted by land owners as corner. Survey No. 59, Book 1, Page 267, dated May 10, 1893, Arnold called his found stone 14"x7"x4". The Plat of Grandview Heights, Book 4, Page 12, dated 1910, call for a stone. County survey No. 84-40-A, dated April 1984, McInd found a stone with a "+" 14" below the surface and set a 1/2" steel rod over it at ground level.

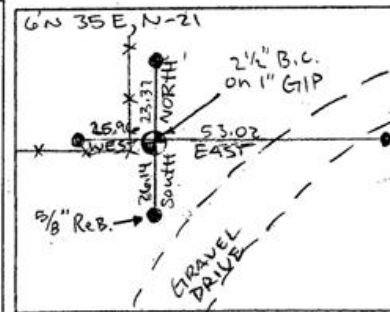
Monument(s) & Accessories Found (Condition & Source):

At the southwest corner of section 13, T6N R35E, found 1/2"x 30" rebar on top of 4"x4"x14" basalt stone with a "+" on top. In addition, we found two railroad spikes along north side of stone at 12" depth.

Monument Set (Procedures & Description):

Set 1"x30" flared end galvanized pipe with 2 1/2" brass cap at the surface stamped (see example below)
T6N R35E
LS 2360
S14 S13
S23 S24
2001

Monument Detail:



New Accessories: WE SET:

A 5/8 rebar with yellow plastic cap stamped 'Tomkins Surveying' which bears East ~ 53.02 feet from the corner. Attached a Umatilla County Bearing object to the west face of railroad tie post. A 5/8 rebar with yellow plastic cap stamped 'Tomkins Surveying' which bears South ~ 26.14 feet from the corner. Attached a Umatilla County Bearing object to the east face of railroad tie gate fence post. A 5/8 rebar with yellow plastic cap stamped 'Tomkins Surveying' which bears West ~ 25.96 feet from the corner. Attached a Umatilla County Bearing object to an existing t-post. A 5/8 rebar with yellow plastic cap stamped 'Tomkins Surveying' which bears North ~ 23.37 feet from the corner. Attached a Umatilla County Bearing object to the east face of guy pole fence gatepost.

Location & Comments:

Compass Declination:

19° East

Firm/Agency: Tomkins Land Surveying, Inc.
20 E. Poplar, Suite 204
Walla Walla, WA 99362

Party Chief: Bryan Martin
Notes: Bryan Martin
Witness: Eric Flowers

orlcr6N35EN21.doc

Surveyor's Seal

REGISTERED PROFESSIONAL LAND SURVEYOR

Handwritten signature of Paul W. P. Tomkins

OREGON JULY 26, 1988 PAUL W. P. TOMKINS 2360

renews 6/30/04

6/30/02

03-23-C