

OREGON CORNER RESTORATION FORM

Section: 24 & 25
Township: 6 North
Range: 34 East of the Willamette Meridian
County: Umatilla
Date: June 1, 2002

Corner Indexing Information: Township 6N Range 34E Corner Code R 25 (Willamette Meridian)

Additional Identifier: (e.g. BLM designation for the corner, street intersection, plat name, block, lot, etc.)

This corner is common to: Range 34E - Sections 24 & 25 ~ Range 35E - Sections 19 & 30.

Oregon Plane Coordinates: N: 848482.071 E: 8711338.036

Zone: North **Order:** second **Datum:** NAD83-91 **Convergence:** 1°25'14.1" **Scale Factor:** .99996031

Previous Renewals/Surveys, etc.: Corner was originally set in 1865 by Odell as a post, mound and pits per contract No. 110. In 1940, Cote shows a rock and tin, survey Q-818-AX. In 1979, Munns shows a bolt at the corner, survey for Webster. In 1979, Krumbain shows a bolt, survey Q-1203-B. In 1986, McLind Shows a 5/8" iron rod, Survey No. 86-13-A. In 1997, Tomkins Land Surveying shows a Oregon Highway Dept. Brass Cap, Survey 97-220-C.

Monument(s) & Accessories Found (Condition & Source):

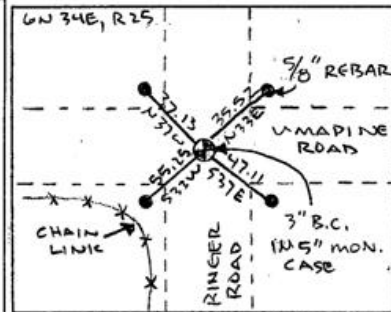
At the Southeast corner of section 24, T6N R34E, a 3" brass cap in 5" diameter iron monument case, with no lid. Placed 3" below the pavement

Monument Set (Procedures & Description):

No changes made for this monument.

OR ST HWY
DIV
24 19
25 30
R34E R35E
T6N

Monument Detail:



New Accessories: WE SET:

A 5/8 rebar with yellow plastic cap stamped 'Tomkins Surveying' which bears N 33°E ~ 35.52 feet from the corner. Attached a Umatilla County Bearing Object Sign to the Southwest face of a Power Pole. A 5/8 rebar with yellow plastic cap stamped 'Tomkins Surveying' which bears S 37°E ~ 47.11 feet from the corner. Set steel t-post along side and attached a Umatilla County Bearing sign. A 5/8 rebar with yellow plastic cap stamped 'Tomkins Surveying' which bears S 33°W ~ 55.25 feet from the corner. Attached a Umatilla County Bearing Object Sign to the Northeasterly face of chain link fence. A 5/8 rebar with yellow plastic cap stamped 'Tomkins Surveying' which bears N 37°W ~ 37.13 feet from the corner. Attached a Umatilla County Bearing Object Sign to the South face of Railroad tie fence post.

Location & Comments:

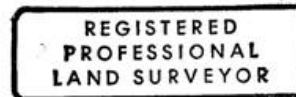
Compass Declination:

19° East

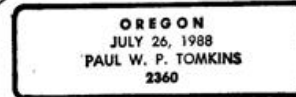
Firm/Agency: Tomkins Land Surveying, Inc.
 20 E. Poplar, Suite 204
 Walla Walla, WA 99362

Party Chief: Bryan Martin
Notes: Bryan Martin
Witness: Eric Flowers

Surveyor's Seal



Paul W. P. Tomkins



*renews 6/30/04
 6/30/02*