

OREGON CORNER RESTORATION FORM

Section: 13
Township: 6 North
Range: 34 East of the Willamette Meridian
County: Umatilla
Date: June 1, 2002

Corner Indexing Information: Township 6N Range 34E Corner Code JK 25 (Willamette Meridian)
Additional Identifier: (e.g. BLM designation for the corner, street intersection, plat name, block, lot, etc.)

Oregon Plane Coordinates: N: 857358.918 E: 8711079.132

Zone: North **Order:** second **Datum:** NAD83-91 **Convergence:** 1°25'13.7" **Scale Factor:** .99996672

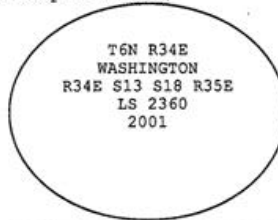
Previous Renewals/Surveys, etc.: Corner was originally set by Odell in 1865 as a stake, mound and pits under GLO contact 110. Bradley, in 1915, shows a stone (Co. Surveyor Book 2, page 274). Walla Walla County Public Works in 1955, shows a wagon skein at the corner (Co. Engineer file 1-0-35). Tomkins Land Surveying, in 1993, shows a Railroad spike at the corner (Walla Walla County Survey Book 6, page 60).

Monument(s) & Accessories Found (Condition & Source):

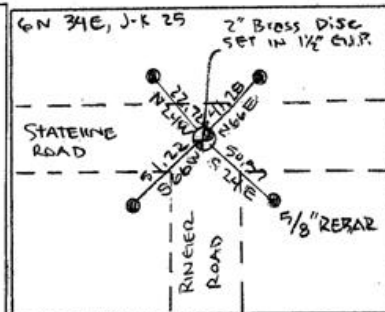
Intersecting the east line of T6N R34E, with Stateline, found a railroad spike with punch 1" below the surface under chip seal and found 1" square head bolt at 5" below surface.

Monument Set (Procedures & Description):

Drove 1 1/2"x15 1/2" galvanized iron pipe around square head bolt and filled with concrete placed 9" of concrete around pipe and set 2" brass disc on top of pipe 1/2" below the surface pavement stamped (see example below)



Monument Detail:



New Accessories: WE SET:

A 5/8 rebar with yellow plastic cap stamped 'Tomkins Surveying' which bears N 66°E ~ 41.28 feet from the corner. Attached a Umatilla County Bearing Object Sign to t-post. A 5/8 rebar with yellow plastic cap stamped 'Tomkins Surveying' which bears S 24°E ~ 50.57 feet from the corner. Attached a Umatilla County Bearing Object Sign to northwest face of power pole. A 5/8 rebar with yellow plastic cap stamped 'Tomkins Surveying' which bears S 66°W ~ 51.22 feet from the corner. Attached a Umatilla County Bearing Object Sign to t-post. A 5/8 rebar with yellow plastic cap stamped 'Tomkins Surveying' which bears N 24°W ~ 22.72 feet from the corner. Attached a Umatilla County Bearing Object Sign to t-post.

Location & Comments:

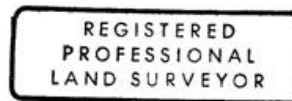
Compass Declination:

19° East

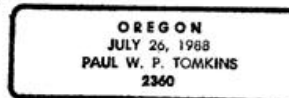
Firm/Agency: Tomkins Land Surveying, Inc.
 20 E. Poplar, Suite 204
 Walla Walla, WA 99362

Party Chief: Bryan Martin
Notes: Bryan Martin
Witness: Eric Flowers

Surveyor's Seal



Paul W. Tomkins



renews 6/30/04

6/30/02